

Process Director Documentation

Database Reference Guide



Last Updated: 2024-08-06, 12:53

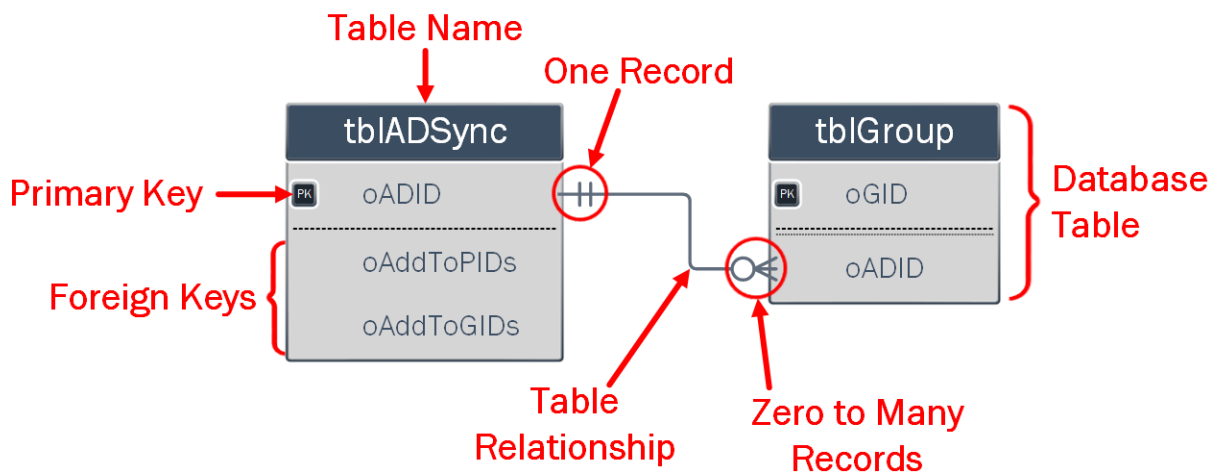
Contents

Contents	2
Table Relationships	3
Key Relationships	3
Detailed Relationships	6
Table Definitions	17
Enumerators #	17
Tables #	34
Internal Database Views	180
Enumerators #	180
Views	181
Audit Log	195

Table Relationships

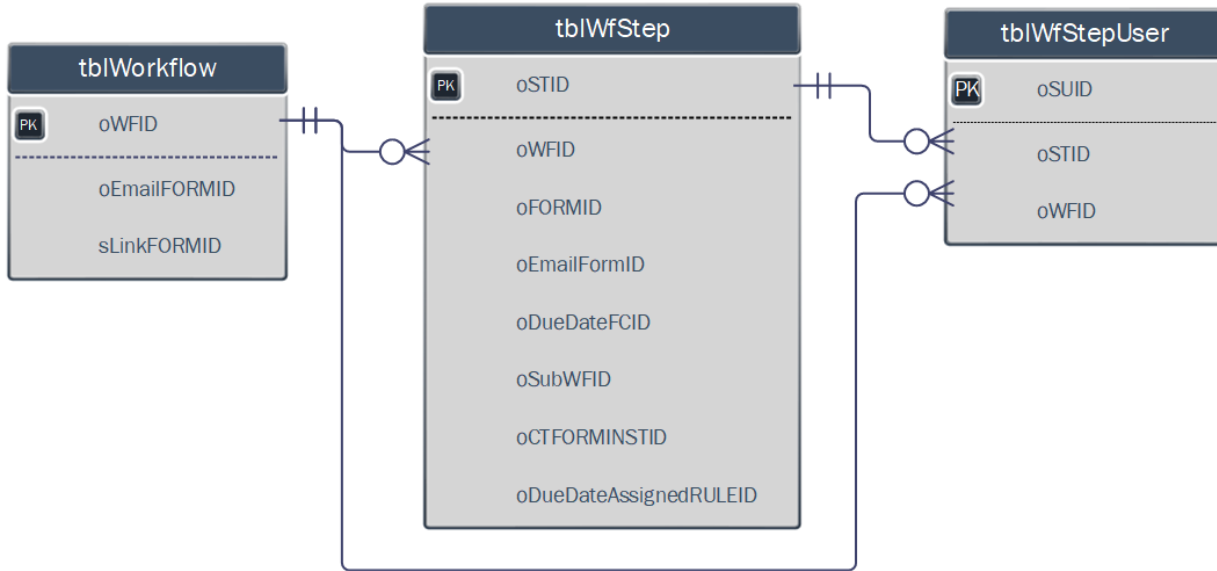
These graphics show the tables and their relationships. Tables in Process Director are linked via columns storing the IDs of tables they are linked to. For example, tblWfStep contains a reference to a tblWorkflow by storing the ID in the oWfID field.

On the diagrams depicted in this section, each table displays only the primary and foreign key fields contained in the table. The data fields are excluded from the diagrams for simplicity. The legend below explains the notations used in the diagrams.

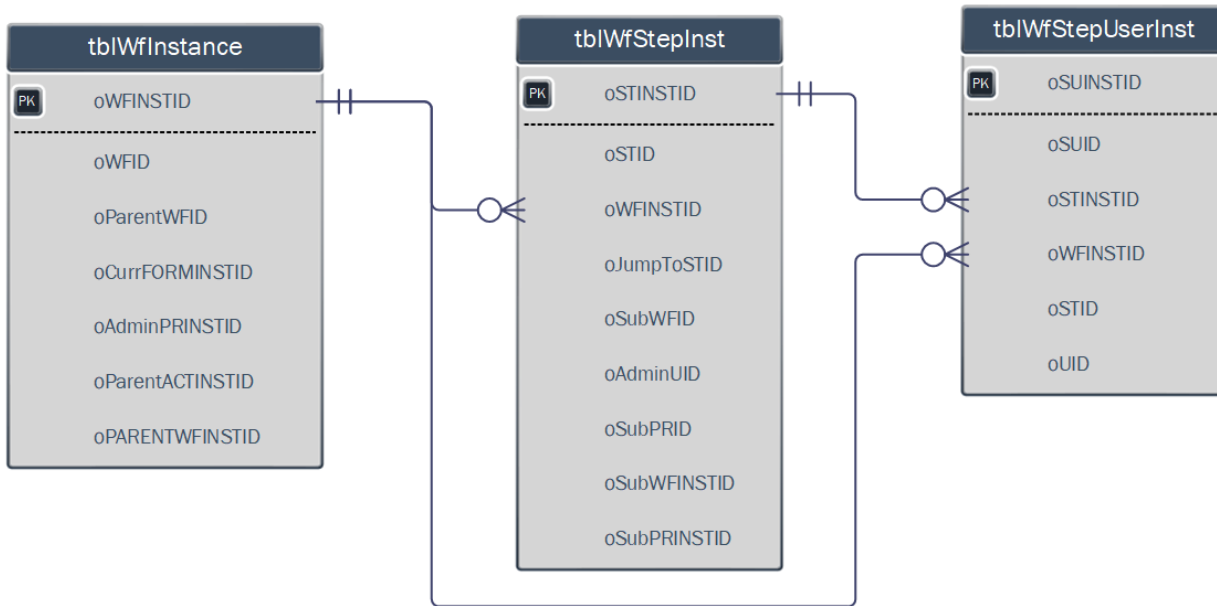


Key Relationships

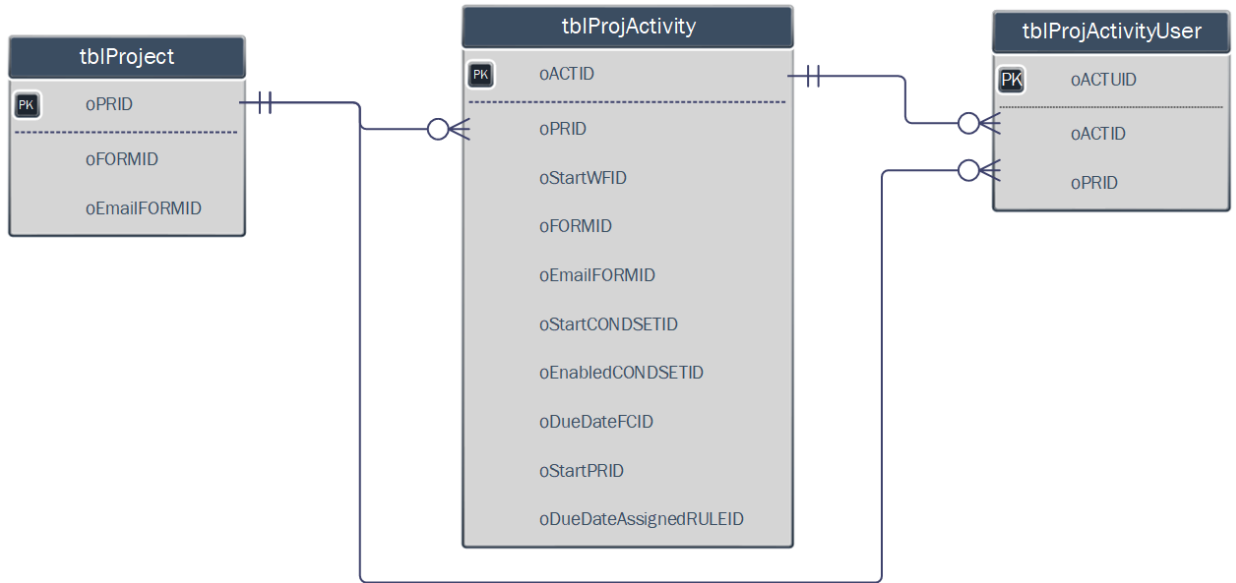
Workflow



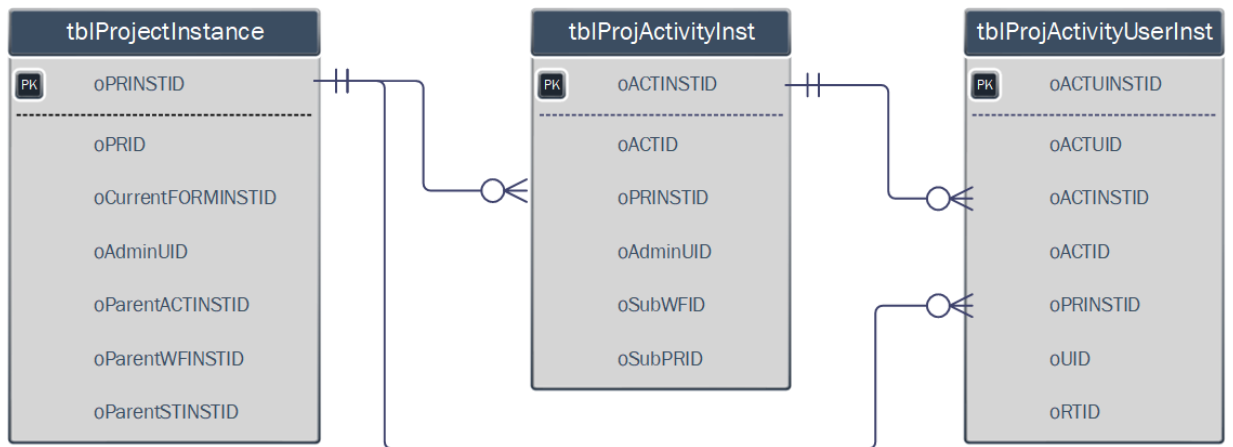
Workflow Instance



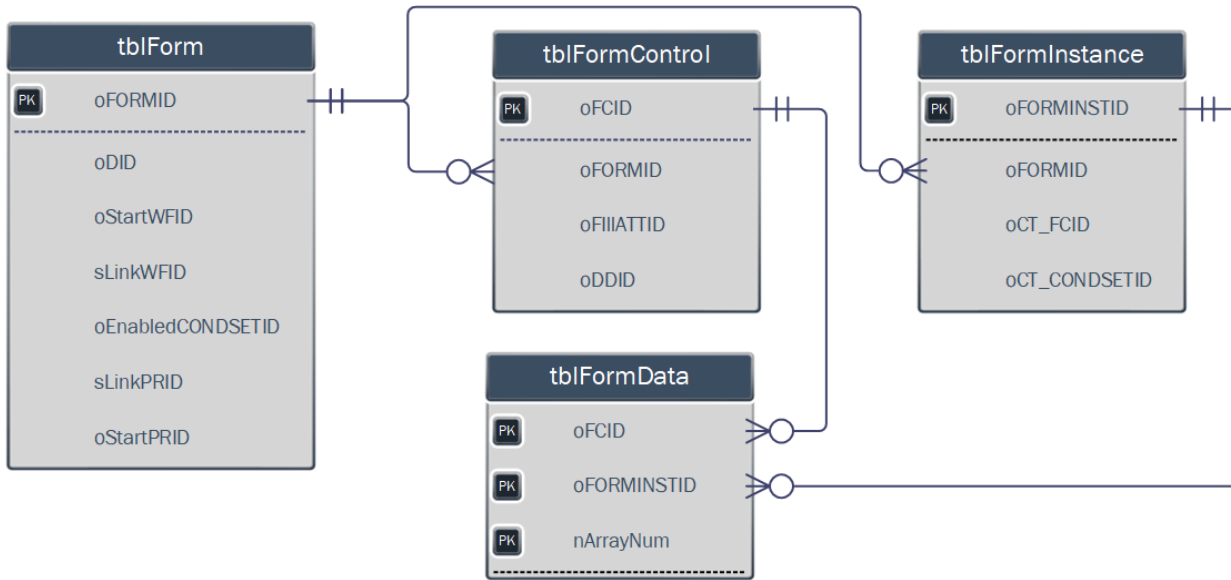
Timeline



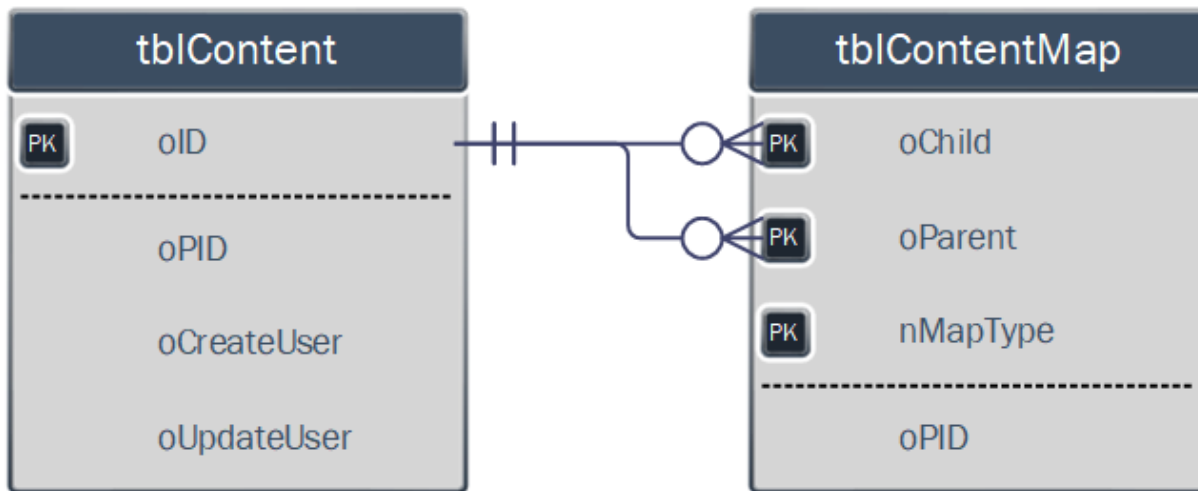
Timeline Instance



Form

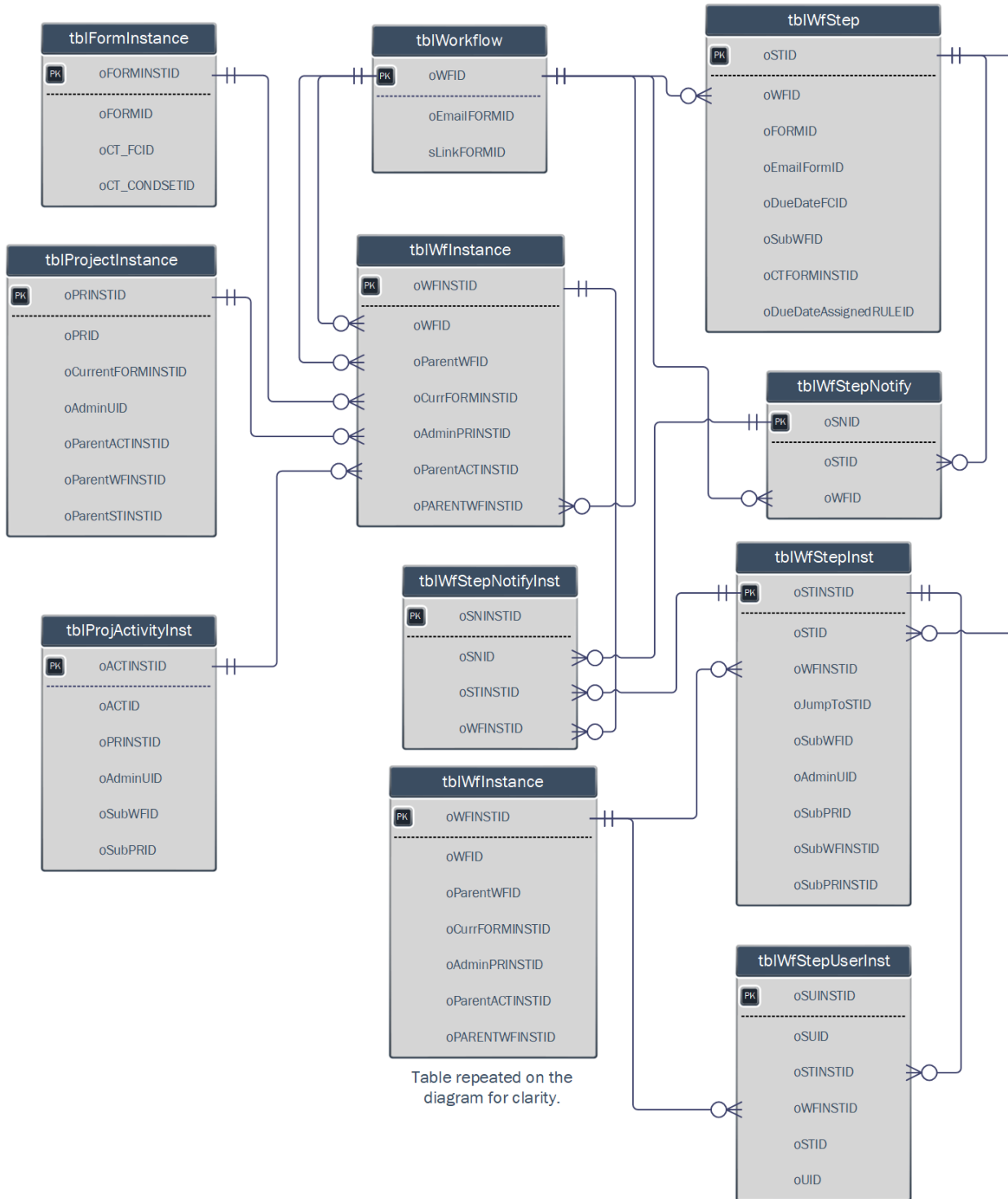


Content

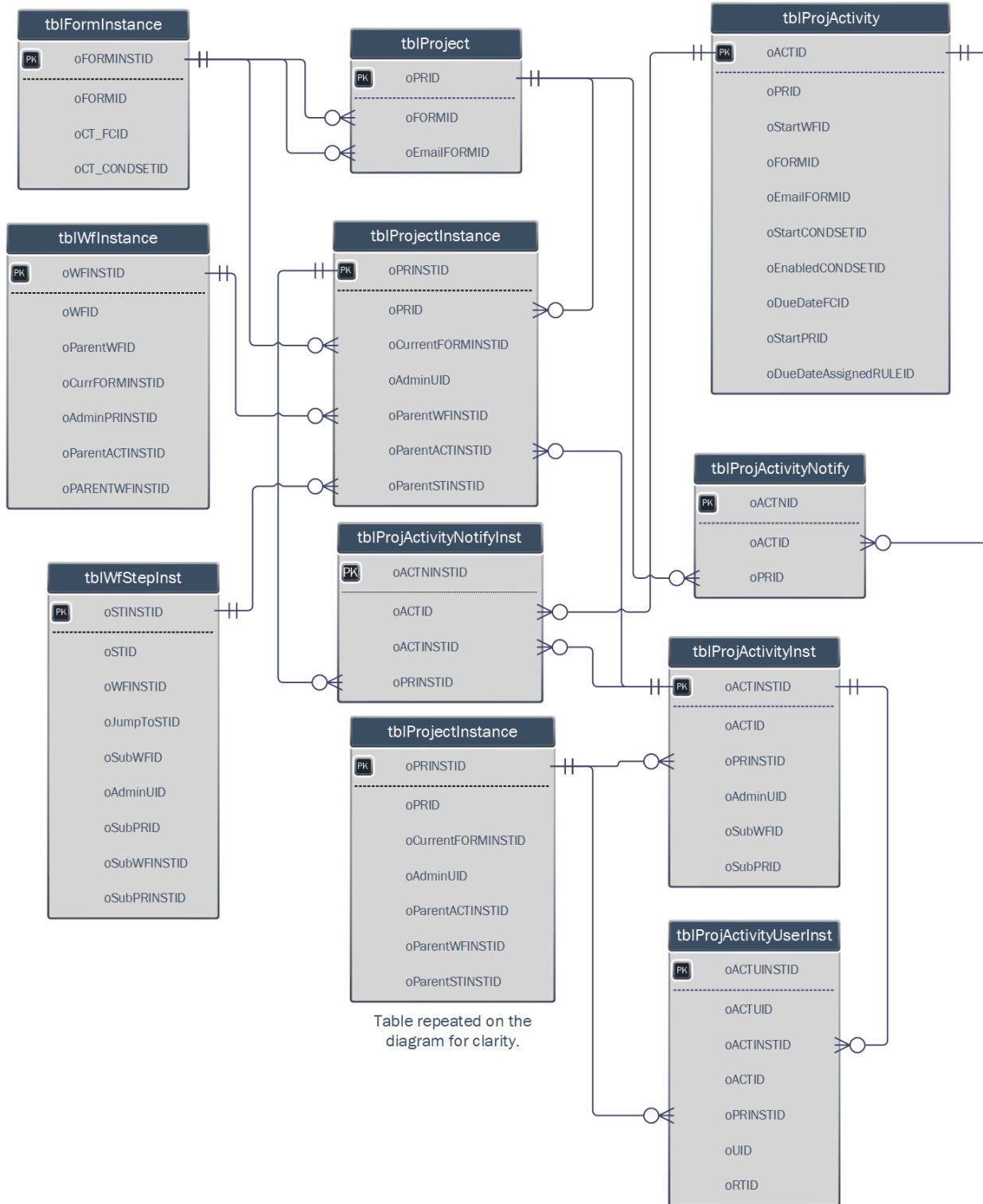


Detailed Relationships

Workflows



Timelines



Form

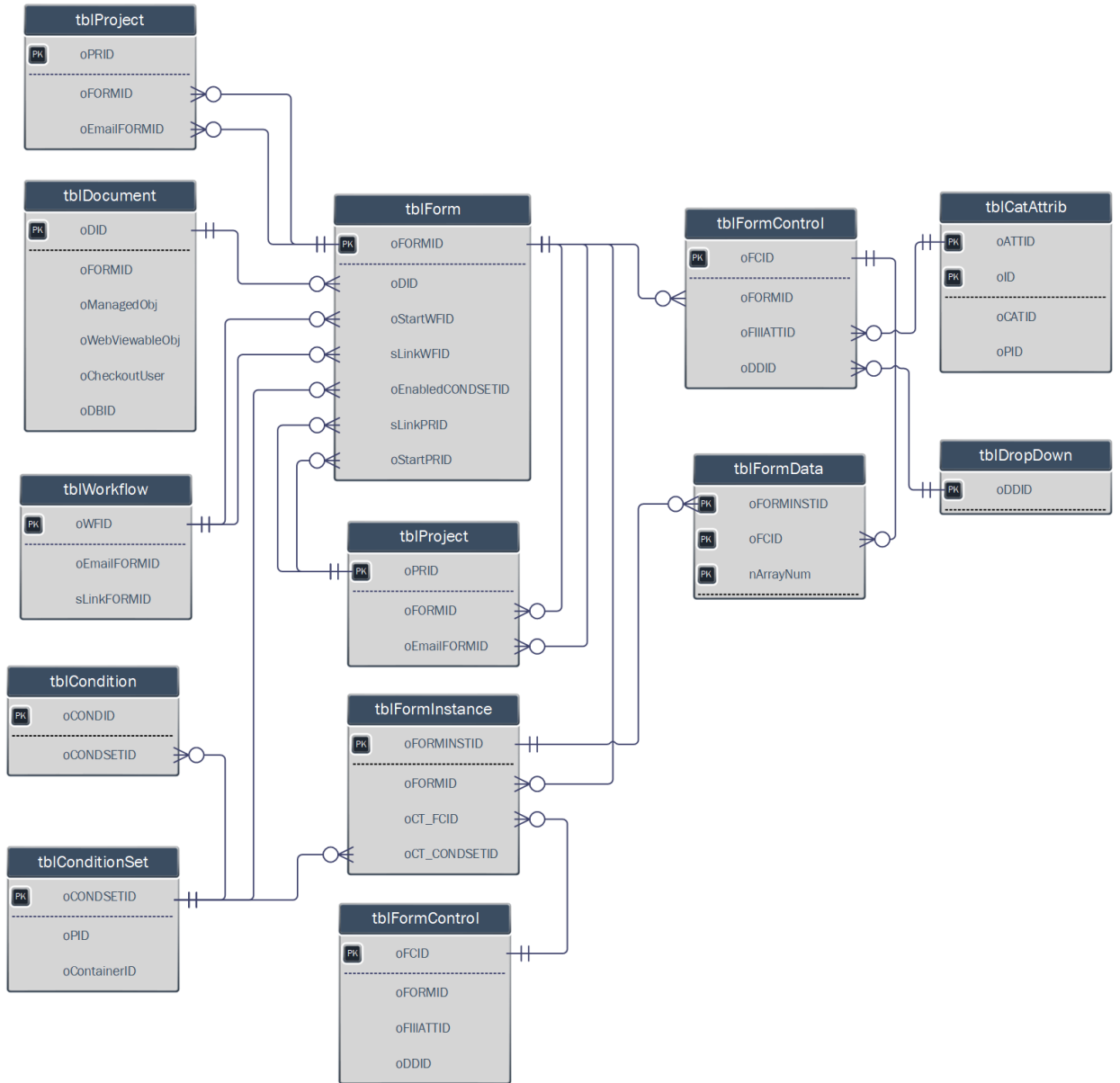
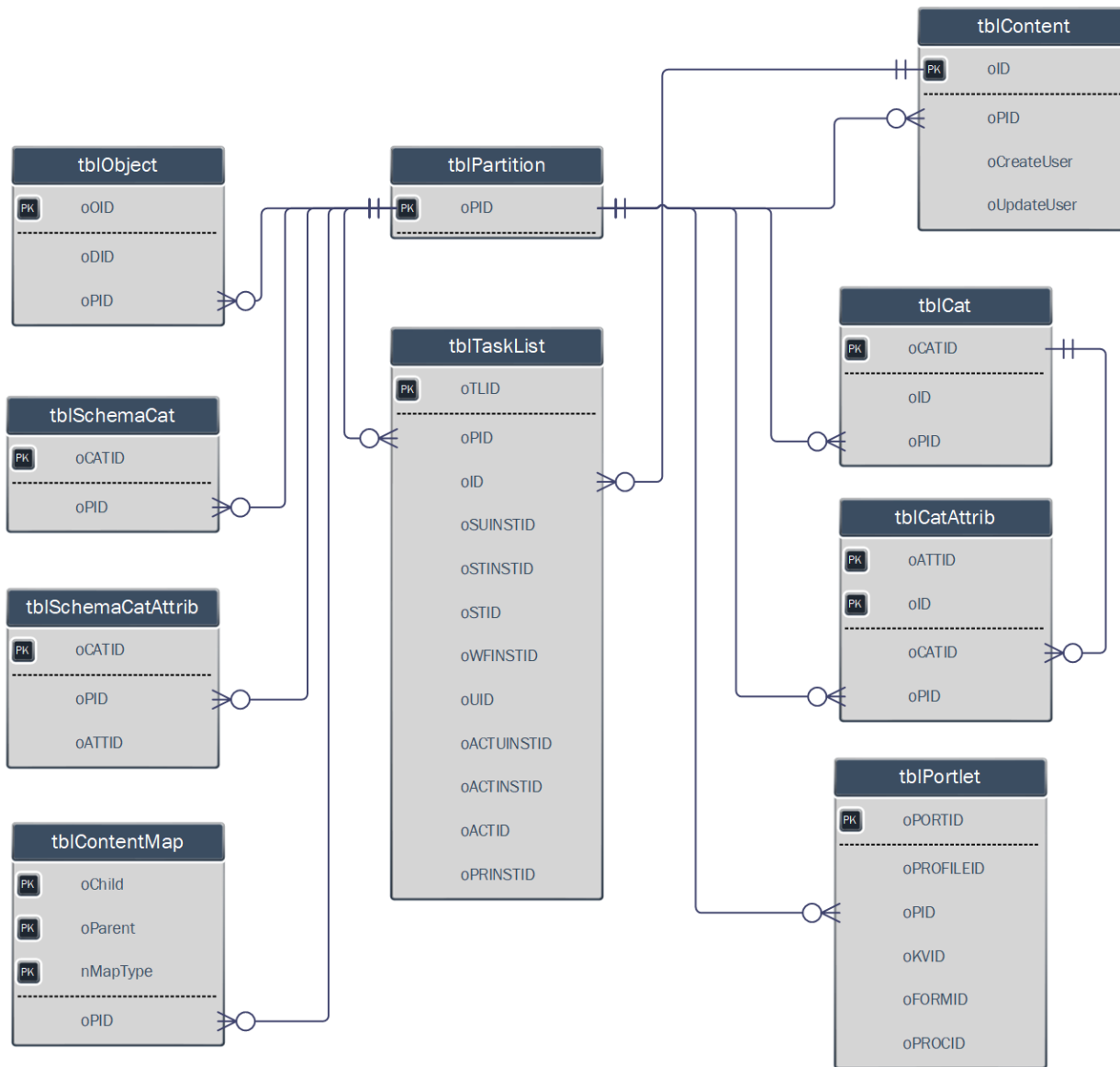


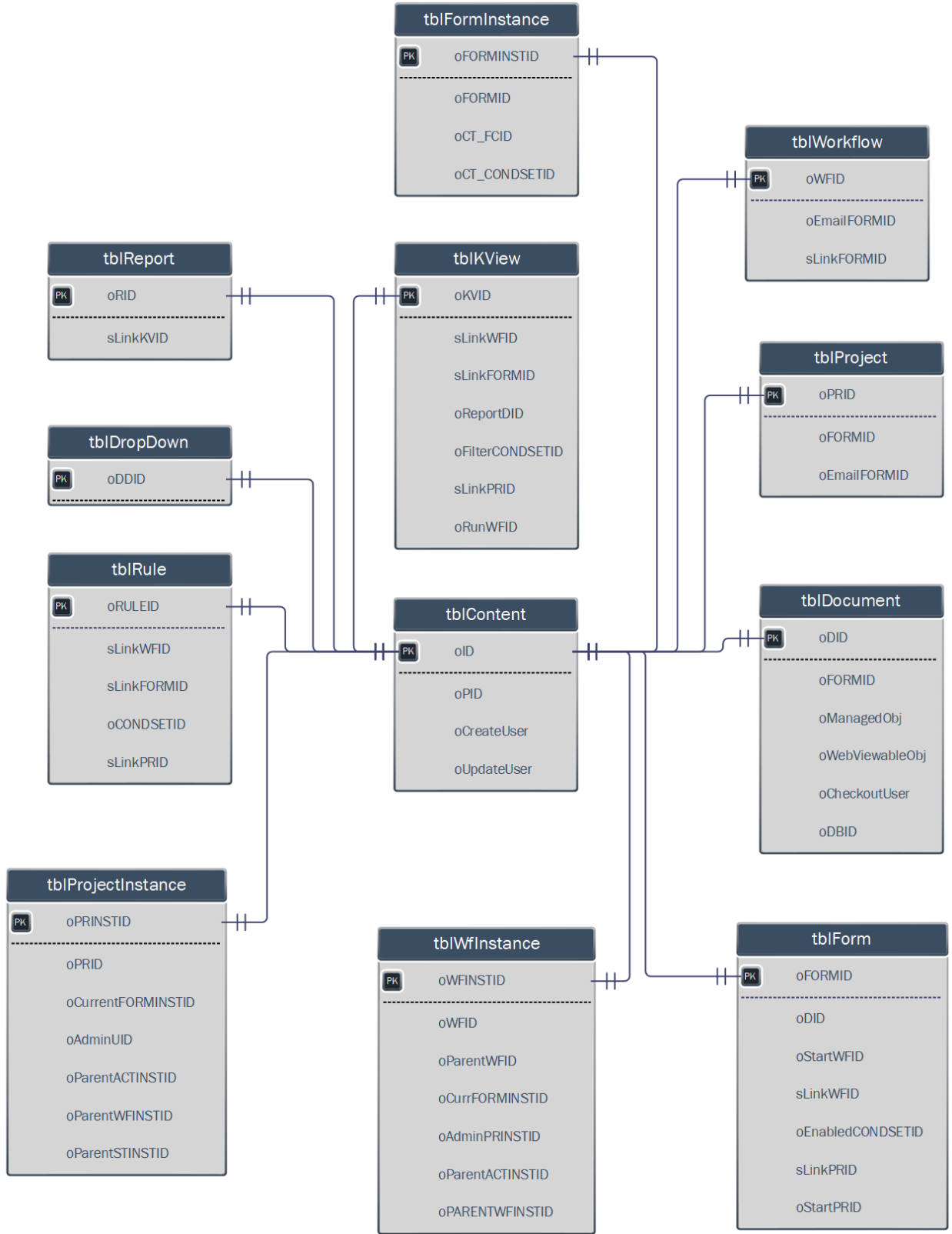
Table repeated on the diagram for clarity.

Partition Content

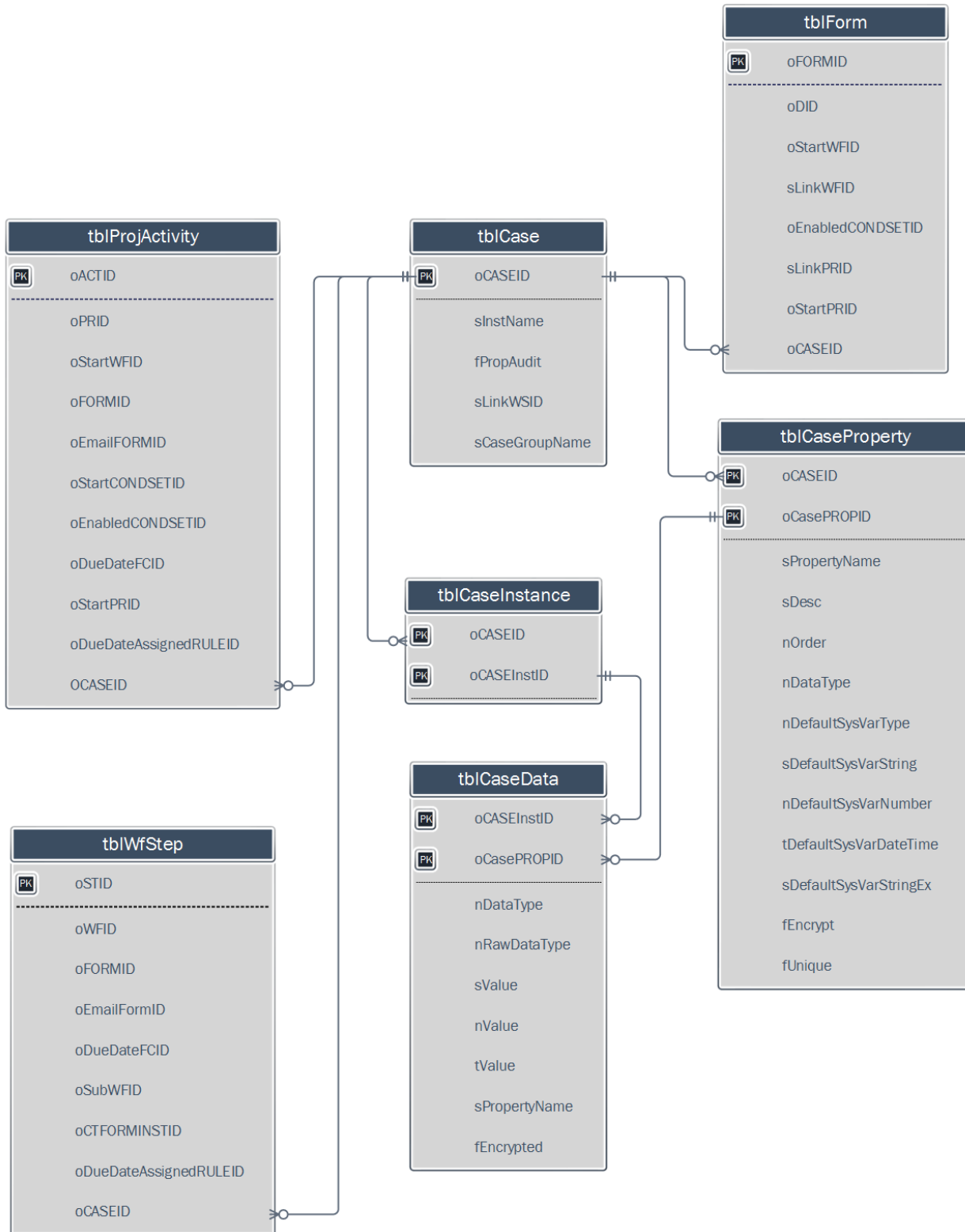


Content Mapping

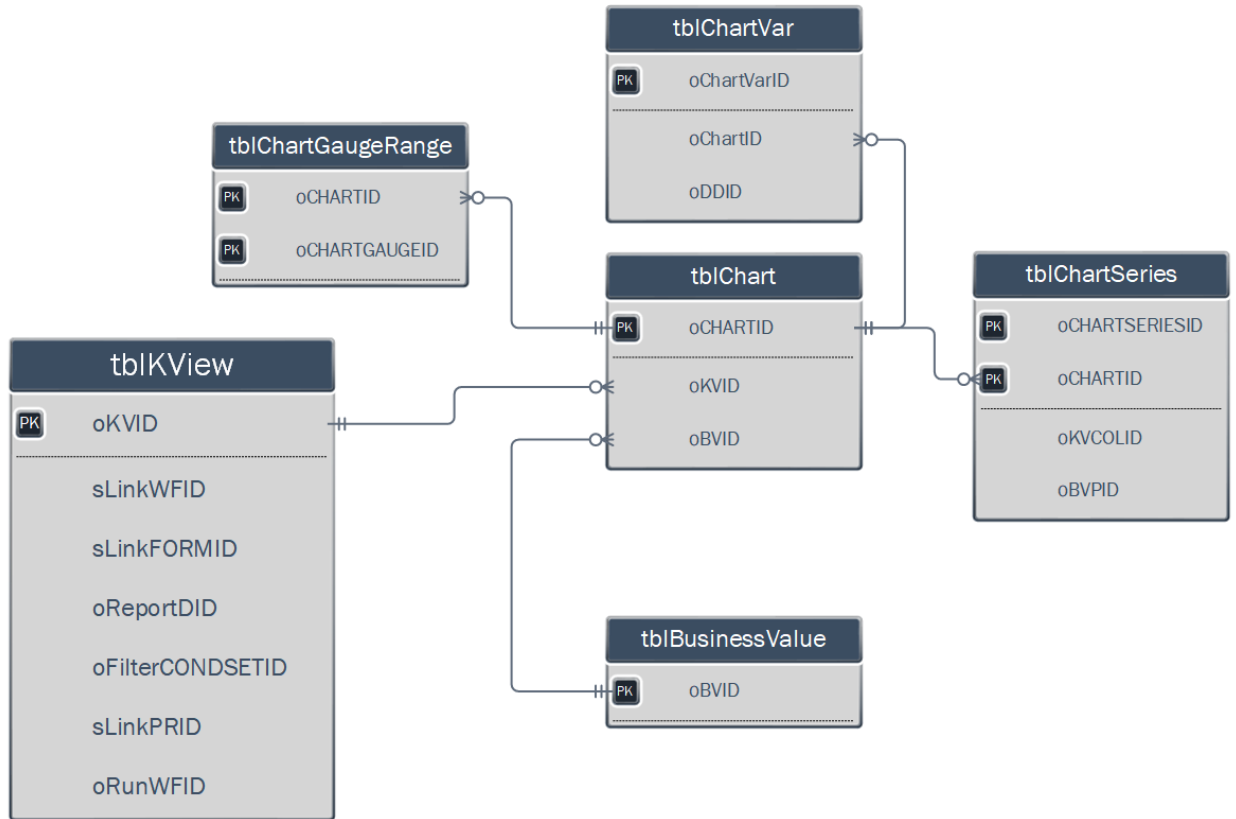
All tables use a Unique GUID as the Primary Key ID. This enables us to create one-to-one relationships between each Content List object and the Content Map object, without needing to create a multi-index key for the tblContent primary key.



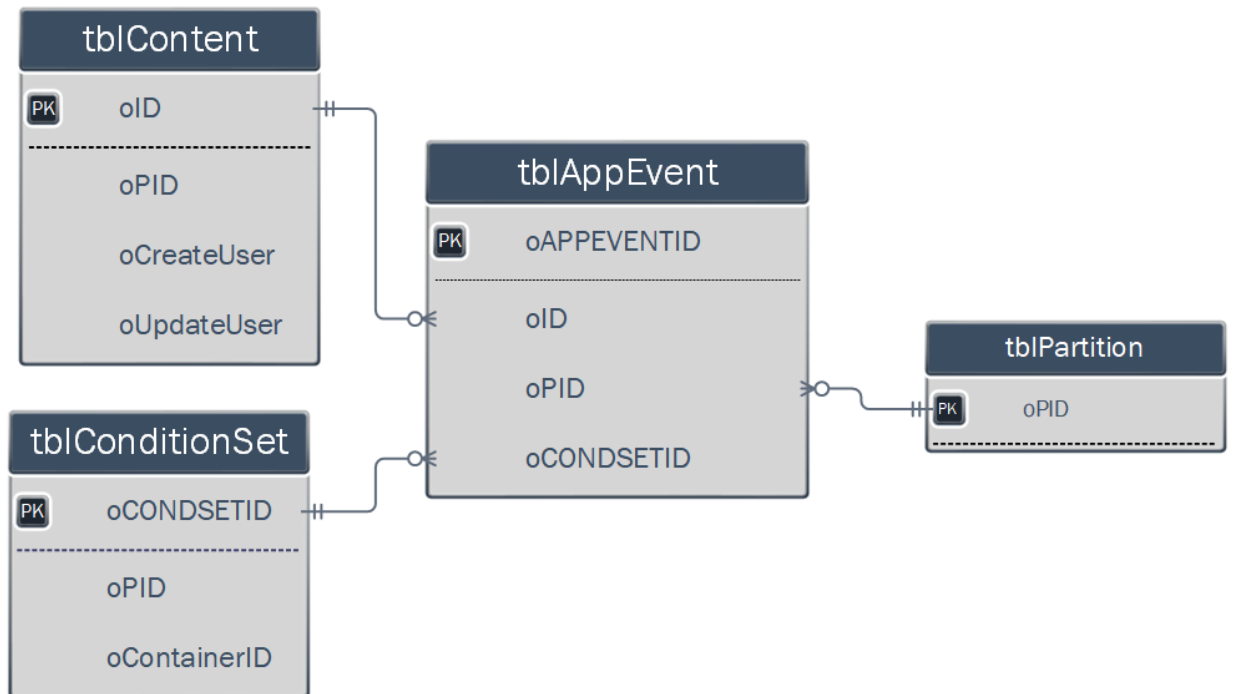
Case Management



Chart



Milestone (Application Event)



Audit Log

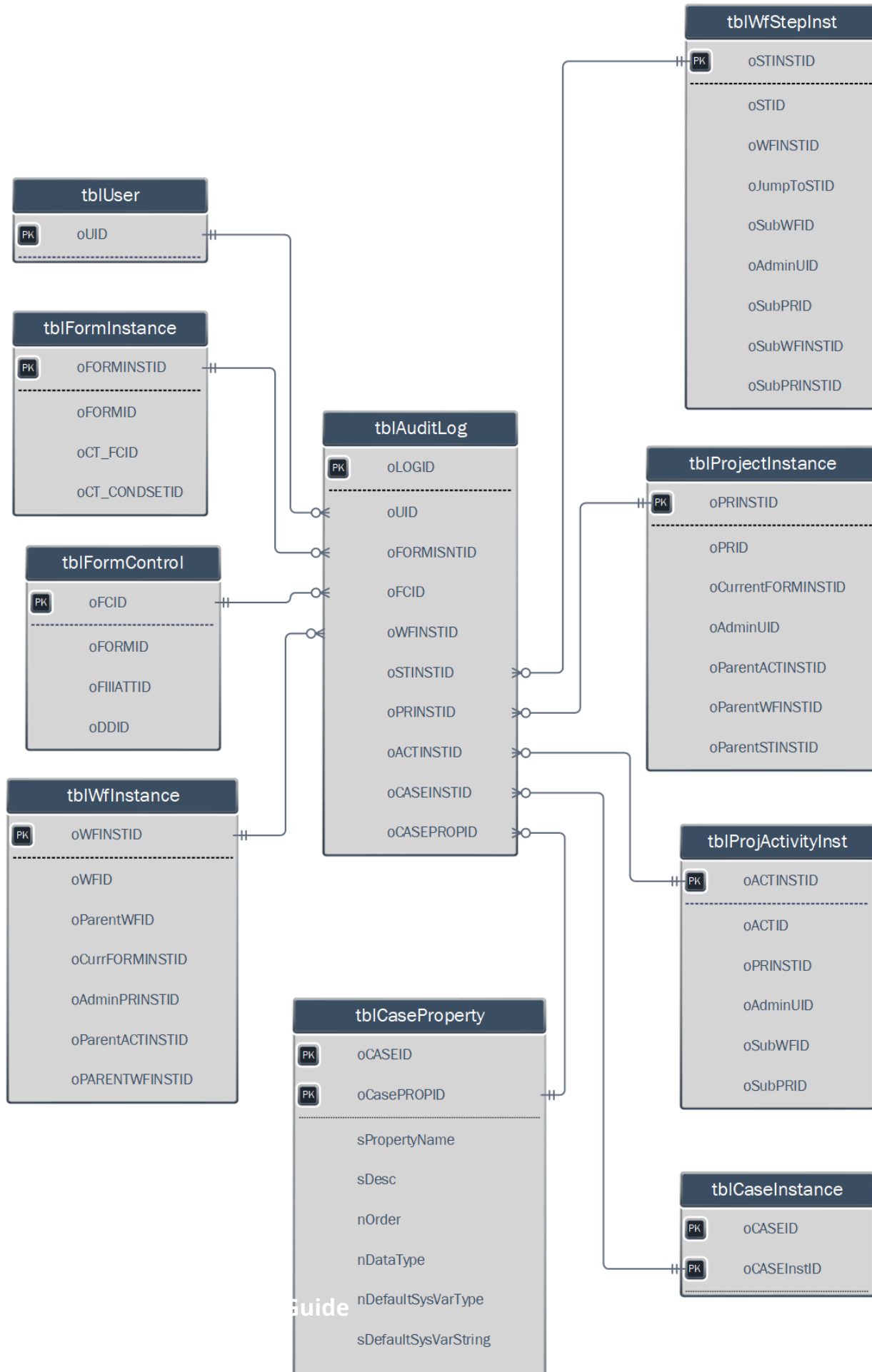



Table Definitions

The table definitions below are current as of Process Director v6.1.0.

 Exercise extreme caution when accessing Process Director tables directly! Any changes you make to the schema of this database or any data stored in it can render your installation of Process Director non-functional. In such a case, a full restore from backup will be the only recovery method possible. BP Logix cannot be held responsible for any actions you might take to alter the Process Director database, or any of its stored data, without direct assistance from BP Logix personnel.

Enumerators

Several table use common enumerators to specify object types or statuses. These common enumerators are listed below.

nAuditType

The table below lists the numeric values for each **nAuditType**, and the audit type that corresponds to each value.

nAuditType	Audit Type Description
0	NotSet
1	Login
2	Login
3	AuthenticateFailed
4	DeleteObject
5	CreateObject
6	UpdateObject
7	MoveObject
8	PasswordChange
9	CreateUser

nAuditType	Audit Type Description
10	DeleteUser
11	CreateGroup
12	DeleteGroup
13	WebService
14	TaskCompleted
15	TaskCompleted
16	TaskRemoved
17	Signature
18	RollbackActivity
19	CancelActivity
20	CancelActivity
21	RestartTimeline
22	SyncStart
23	SyncEnd
24	JumpToStep
25	CancelStep
26	StopStep
27	StopWorkflow
28	RestartWorkflow
29	UpdateUser
30	AddUserToGroup
31	RemoveUserFromGroup
32	RemoveObjectFromParent
33	DownloadDocument
34	ViewFormData
35	PermissionAdded
36	PermissionAdded

nAuditType	Audit Type Description
37	PermissionUpdated
38	PermissionReplicated
39	PermissionGiven // Elevated privileges given (escalated permissions)
40	PermissionDeniedView
41	PermissionDeniedModify
42	PermissionDeniedDelete
43	PermissionDeniedExecute
44	PermissionDeniedAdmin
45	ImpersonateOn
46	ImpersonateOff
47	DelegateOn
48	DelegateOff
49	UserDisabled
50	UserEnabled
51	AdminReplaceUser
52	AdminPageAccess
53	ImportObjects
54	ExportObjects
55	CustomApp
56	FormDataChange
57	ViewForm
58	AdminPageUpdate
59	UpdateDocumentProps
60	RollbackDocument
61	CancelDocumentCheckout
62	CheckoutDocument

nAuditType	Audit Type Description
63	AnonymousAccess
64	ObjectLock
65	ObjectUnlock
66	ObjectUnlockOther
67	ViewCaseData
68	CaseDataChange
69	CaseModeEntered
70	ReInit
71	UserLockedOut
72	AddGroupToPartition
73	RemoveGroupFromPartition
74	AddUserToPartition
75	RemoveUserFromPartition
76	AddAppEvent
77	UpdateAppEvent
78	DeleteAppEvent
79	KViewRun
80	MLPublish
81	UserProfileUpdated
82	StreamActionEvaluate
83	AdminDeleteLogs
84	DayPassLicenseExceeded
85	EmailUnsubscribeAdd
86	EmailUnsubscribeRemove

nAuthType

This enum specifies the type of process Director User account for each user. The table below lists the numeric values for each **nAuthType**, and the Authentication type type that corresponds to each value.

nAuditType	Audit Type Description
-1	Unknown
0	Built-in
1	Windows
2	LDAP
3	External
4	SAML
5	Header

nControlType

Possible values for the **nControlType** field are Shown below.

nControlType	Type
0	None
1	Input
2	TextBox
3	Date
4	Button
5	Dropdown
7	Array
8	Section
9	Radio
10	CheckBox
11	Custom
12	CustomTaskConfigSection
13	CustomTaskRunSection
14	UserPicker
15	GroupPicker
16	FormControlPicker

nControlType	Type
17	Attach
18	ShowAttach
19	Label
20	ListBox
21	DateTime
22	Time
23	RichText
24	DBConnectorPicker or DSNPicker
25	ContentPicker
26	Calculate
27	SysVar
28	RoutingSlip
29	EmailData
30	RadioItem
31	SignatureComments
32	CommentLog
33	KView
34	Sum
35	ListControl
36	TabStrip
37	TabContent
38	DateDiff
39	ButtonArea
40	Reauth
41	AuditViewer
42	AttachKView
43	ShowAttachKView

nControlType	Type
44	HTML
45	SchedulePicker
46	ShowReport
47`	Signature
48	Invite
49	Sort
50	Image
51	CategoryPicker
52	AttributePicker
53	String
54	TextBoxEx
55	AttachPolling
56	HtmlTable
57	HtmlTableRow
58	HtmlTableCell
59	Rating
60	LockedForm
61	Slider
62	TopazSignature
63	ASPListBox
64	CheckBoxList
65	AttachDrop
66	ActivityLog
67	Tooltip
68	Icon
69	CKEditor
70	SectionEmbedded

nControlType	Type
71	StaticText
72	Data List

nDataType

Possible values for the **nDataType** field and the corresponding object types are:

nDataType	Data Type
0	None
1	String
2	Number
3	Date
4	DateTime
5	Time
6	Currency
7	Integer
8	Email
9	SSN
10	PhoneNumber
11	ZipCode
12	UIDList
13	GIDList
14	FormControlIDList
15	DBConnectorIDList
16	ContentIDList
17	CheckBox
18	Size
19	Version
20	Password

nDataType	Data Type
21	FORMIDList
22	WFIDList
23	STINSTIDList
24	WorkflowStatus
25	CATIDLIST
26	ATTIDLIST
27	RULEIDLIST
28	WorkflowTermReason
29	STIDList
30	EmailTypes
31	DropDownSysVar
32	YesNo
33	PRIDList
34	ACTIDList
35	ProjectStatus
36	ACTINSTIDList
37	RUNPROCID
38	PIDList
39	URL
40	RegEx
41	DDIDList
42	KVIDList
43	COMPLETETASK
44	ContentIDListThumbnails
45	GOALIDLIST
46	BVPIDLIST
47	BVIDLIST

nDataType	Data Type
48	CASEIDLIST
49	CASEPROPIDLIST
50	ParmID
51	ChartColumnControlIDList
52	ObjectTypePicker
53	MLIDLIST
54	AppEventName
55	Concealed
56	TaskUser

nDefaultPage

The possible values for the **nDefaultPage** field are shown below.

nStatus	Status
0	Unset
1	Home
2	Workspace
4	Production

nDSType

The possible values for the **nDSType** field are shown below.

nStatus	Status
0	Set Form Data
1	Set Dropdown

nEventType

The possible values for the **nEventType** field are shown below.

nEventType	Event Name	Description
0	None	
1	FieldEvent	An event mapped to a specific form field event, e.g. button or event field FCID.
2	BP_Event	An event mapped to all Form events.
3	BP_FormInitialize	An event called one time to initialize a Form instance.
4	BP_ViewStateInit	An event mapped to the Form Init viewstate. This is called once prior to the BP_Complete event, after which it is reset.
5	BP_Rules	Called prior to a condition evaluation.
6	BP_Rules_Post	Called after a condition evaluation.
7	BP_Validation	Called prior to a built in Form validation.
8	BP_Validation_Post	Called after a built in Form validation.
9	BP_Completed	Mapped to the Form Complete event. You can't stop or interrupt the Form Complete event.
10	BP_Display	Called just prior to displaying a Form, any time the form opens, or any time the Form is refreshed.
11	BP_AjaxRequest	Used for Ajax requests, only as a backwards compatibility technique.
-1	TaskBegin	Called prior to the start of a Process task.
-2	TaskEnd	Called after the completion of a Process Task.

nMapType

Possible values for the **nMapType** field and the corresponding object types are:

nMapType	Object Type
1	Child
2	Reference

nMapType	Object Type
3	Pending Workflow object
4	Custom Task
5	Pending Process Timeline object
6	Pending Process object
7	Case object

nRawDataType

Possible values for the **nRawDataType** field and the corresponding types are:

nRawDataType	Data Type
0	None
1	String
2	Number
3	DateTime
4	ObjectID

nParentType/nChildType

Possible values for the **nParentType** and **nChildType** fields and their corresponding types. This enum is used extensively in tblMembership to specify the parent/child relationships between all Process Director objects.

nRawDataType	Data Type
0	Not Set
1	Document
2	Folder
3	ReviewSet
4	Rule
5	Knowledge View
6	Workflow
7	Workflow Instance

nRawDataType	Data Type
8	Task List
9	User
10	Group
11	Partition
14	Form
15	Form Instance
17	Category
18	Dropdown
19	Profile
20	DB Connection
21	Report
22	Goal
23	Business Value
24	Chart
25	Dashboard
26	Chart Series
27	Machine Learning Object
28	Stream Action
29	Data List
31	TreeView Object - Active Workflows
32	TreeView Object - Inactive Workflows
33	TreeView Object - Form Instances
34	TreeView Object - Run KView
35	TreeView Object - Case Instances
36	Attribute
37	Form Control
38	Workflow Step

nRawDataType	Data Type
39	Workflow Branch
40	Workflow Step User
41	Workflow Step Instance
42	Workflow Step User Instance
43	Form Custom Task
44	Workflow Custom Task
45	Rule Custom Task
46	Script
47	Content Object
48	Rule Value
49	AD Synchronization Profile
50	Object References
51	Object Form References
52	Object Workflow References
53	Object Workflows
54	Form Email
55	Project (Process Timeline)
56	Project Activity
57	Project Activity User
58	Project Activity Notify
59	Project Activity Dependency
60	Project Instance
61	Project Activity Instance
62	Project Activity User Instance
63	Treeview Object - Active Projects
64	Treeview Object - Inactive Projects
65	Object Project References

nRawDataType	Data Type
66	Project Custom Task
67	Process, or for backwards compatibility, Generic Process Definition
68	Knowledge View Column
69	Knowledge View Filter
70	SharePoint Data Source
71	Database Data Source
72	Project Result
73	Case
74	Case Instance
75	Paramater
76	Chart Field
77	Business Value Property
78	Drilldown Target
79	Chart Data Source
80	Treeview object - Run Dashboard
81	Goal Action
82	Case Property
83	Rule Value Condition
84	Chart Series Condition
85	Image
86	Log
87	Log Event
88	IOT Data Source
89	Application Event
90	Activity Log
91	Form Lock

nRawDataType	Data Type
92	Application
93	Log Monitoring
94	SQL View
95	SQL View Form Control

nStatus

Possible values for the **nStatus** field and the corresponding object types are:

nStatus	Status
0	Pending (Not yet running)
1	Active
2	Inactive (Completed)

nTaskListType

The **nTaskListType** field will store several possible integer values.

VALUE	DESCRIPTION
0	NotSet - No task set
1	WorkflowTask - a Workflow task assignment
2	CheckOut - a document is checked out
3	SavedFormInst - a form instance that is saved for later, but not submitted
4	ProjectTask - a project activity task assignment, i.e., a Process Timeline task.
5	ObjectCheckOut - a Content List object is checked out

nTermReason

Possible values for the **nTermReason** field and the corresponding reasons are:

NUMERIC VALUE	UI TEXT VALUE	DESCRIPTION
0	Not Set	Not Set
1	Completed	Normal completion
2	Timeout	Timeout occurred on this step or activity
3	Not Required	The user did not finish because conditions allowed the task to complete
4	Admin Canceled	The step, activity or user was canceled
5	Reassigned	The user task was reassigned to another user
6	Not Required	The activity was not needed because of the "Needed When" conditions
7	Notified	The user was notified by email in an Notify task
8	Stopped	The Timeline was stopped at this activity
9	Canceled	An iteration break condition was met on this running activity causing it to be stopped
10	Parent Restarted	An iteration restart condition was met on this running activity causing it to be stopped

nType

Possible values for the nType field and the corresponding object types are:

nType	Object Type
1	Document
2	Folder
3	Review Set
4	Business Rule
5	Knowledge View
6	Workflow Definition
7	Workflow Instance
8	Task List

nType	Object Type
9	User
10	Group
11	Partition
14	Form
15	Form Instance
18	Dropdown Object
20	Database Connection
21	Report
22	Goal
23	Business Value
24	Chart
25	Dashboard
27	Machine Learning Object
28	Stream Action
29	Data List (Development Item, not yet implemented in the product.)
55	Process Timeline Definition
60	Process Timeline instance
73	Case Definition
74	Case Instance
92	Application Object (Development Item, not yet implemented in the product.)

Tables

tblADSync

This table contains information related to Active Directory synchronization profiles.

COLUMN NAME	DATATYPE	LENGTH	DESCRIPTION
oADID	varchar	36	Primary Key. The ID

COLUMN NAME	DATATYPE	LENGTH	DESCRIPTION
			of the Active Directory Synchronization Profile in Process Director.
sName	nvarchar	256	The name of the AD.
sDesc	nvarchar	1024	The description of the AD.
nContextType	int		Synchronization context indicator.
sContextName	nvarchar	1024	Synchronization context name.
sContextContainer	nvarchar	1024	Synchronization context container.
sUserID	nvarchar	64	User's ID.
sPassword	nvarchar	64	User's Password.
fSecure	tinyint		Boolean: determines if AD should be secured.
sUsersMustBelongTo	nvarchar	512	Objects to which users must belong.
sGroupsMustBelongTo	nvarchar	512	Objects to which groups must belong.
fDebug	tinyint		Flag to determine whether AD Sync is in debug mode.
fTestMode	tinyint		Flag to determine whether AD Sync is in Test Mode.
fSyncUsers	tinyint		Flag to determine if PD should sync users

COLUMN NAME	DATATYPE	LENGTH	DESCRIPTION
			with the AD.
fSyncGroups	tinyint		Flag to determine if the PD should sync groups with the AD.
oAddToPIDs	varchar	1024	Partition ID list of the partitions to which this AD group will be synced.
oAddToGIDs	varchar	1024	Group ID list of the groups to which this AD group will be synced.
fAddOnlyUsers	tinyint		Flag to determine if only users should be added to the active directory.
fAddOnlyGroups	tinyint		Flag to determine if only groups should be added to the active directory.
fSyncUsersInGroups	tinyint		Flag to determine if user groups should be synced.
nDirectoryType	int		The type of user directory.
nLDAP_AuthTypes	Int		The authentication type used when connecting to the LDAP server.
sLDAP_URL	nvarchar		The URL of the LDAP server.

COLUMN NAME	DATATYPE	LENGTH	DESCRIPTION
sLDAP_UserFilter	nvarchar		The user filter string on the LDAP calls.
sLDAP_GroupFilter	nvarchar		The group filter string on the LDAP calls.
sLDAP_GUID_Field	nvarchar	64	The field in the LDAP server containing the user's GUID.
sLDAP_UserID_Field	nvarchar	64	The field in the LDAP server containing the user's User ID.
sLDAP_Alias_Field	nvarchar	64	The field in the LDAP server containing the user's alias.
sLDAP_Email_Field	nvarchar	64	The field in the LDAP server containing the user's email.
sLDAP_Groups_Field	nvarchar	64	The field in the LDAP server containing the groups to which the user belongs.
sProperty_Phone	nvarchar	64	The field in the LDAP server containing the user's phone number.
sProperty_Description	nvarchar	64	The field in the LDAP server containing the user's description.
sProperty_Title	nvarchar	64	The field in the LDAP server containing the user's Title.

COLUMN NAME	DATATYPE	LENGTH	DESCRIPTION
sProperty_Office	nvarchar	64	The field in the LDAP server containing the user's office.
sProperty_Company	nvarchar	64	The field in the LDAP server containing the user's company.
sProperty_Dept	nvarchar	64	The field in the LDAP server containing the user's department.
sProperty_CustomStr	nvarchar	64	The field in the LDAP server containing a custom string for the user.
sProperty_CustomStr2	nvarchar	64	The field in the LDAP server containing another custom string for the user.
sProperty_CustomDate	nvarchar	64	The field in the LDAP server containing a custom date for the user.
sProperty_CustomNumber	nvarchar	64	The field in the LDAP server containing a custom number for the user.
nLastResult	int		Integer value of the last AD Sync Result.
sLastResult	nvarchar	256	text Value of the last AD sync Result.
tlastRun	datetime		Datetime of last time the Sync was run.

COLUMN NAME	DATATYPE	LENGTH	DESCRIPTION
sProperty_Country	nvarchar	64	The field in the LDAP server containing the user's country.
sProperty_Location	nvarchar	64	The field in the LDAP server containing the user's location.
sProperty_BusinessUnit	nvarchar	64	The field in the LDAP server containing the user's business unit.
sProperty_Manager	nvarchar	64	The field in the LDAP server containing the user's manager.
sProperty_LegalEntity	nvarchar	64	The field in the LDAP server containing the user's Legal Entity.
tCreateTime	datetime		When the sync was created.
tLastModified	datetime		When the sync was last modified.
fRemoveUsersFromGroups	tinyint		Flag to remove users from groups not listed in the current import.
fAddAsDayPassUsers	tinyint		Flag to add user as a day pass user.

tblAppEvent

This table contains information for a Milestone item.

COLUMN NAME	DATATYPE	LENGTH	DESCRIPTION
oAPPEVENTID	varchar	36	Primary Key. The ID of the Milestone.

COLUMN NAME	DATATYPE	LENGTH	DESCRIPTION
oID	varchar	36	Object ID of an associated object.
nCommentType	int		Comment type indicator.
oPID	varchar	36	Category's partition ID.
oCONDSETID	varchar	36	The Condition Set ID of the condition set associated with the Milestone.
sAppEventText	varchar	MAX	Text of the Milestone.
nOrder	int		Milestone order.
sIconColor	nvarchar	64	Color of the Milestone icon.
nIcon	int		Icon ID of the configured icon.
sGroupNames	nvarchar	1024	List of Milestone Event Group names.
sName	varchar	256	Name of the Milestone.

tblApplication

This table contains information for an Application object.



This feature is currently under development, and isn't operational.

COLUMN NAME	DATATYPE	LENGTH	DESCRIPTION
oAPPID	varchar	36	Primary Key. The ID of the Milestone.
oFORMID	varchar	36	Object ID of an asso-

COLUMN NAME	DATATYPE	LENGTH	DESCRIPTION
			ciated Form.
oKVID	int		Object ID of an associated Knowledge View.
oPROCID	varchar	36	Object ID of an associated Process object.

tblAuditLog

This table contains information for an entry in an item's audit log.

COLUMN NAME	DATATYPE	LENGTH	DESCRIPTION
nLogType	int		The type of audit log.
oUID	varchar	36	User UID of the user involved.
sUserName	nvarchar	256	Name of the user involved.
tUpdate	datetime		Datetime this item was added to the log.
oFORMINSTID	varchar	36	Form Instance ID of the Form Instance involved.
oFCID	varchar	36	Form Control ID of the form control involved.
sFieldName	nvarchar	64	Control's field name.
sDisplayName	nvarchar	256	Control's display (friendly) name.
sPrevValue	nvarchar	2000	Previous value of the control.
sNewValue	nvarchar	2000	Current value of the control.

COLUMN NAME	DATATYPE	LENGTH	DESCRIPTION
oWFINSTID	varchar	36	Workflow Instance ID of the Workflow instance involved.
oSTINSTID	varchar	36	Step Instance ID of the Workflow Step instance involved.
sWorkflowName	nvarchar	256	Name of the Workflow involved.
sStepName	nvarchar	128	Name of the Step involved.
sComment	nvarchar	1024	Step comments.
sBranchName	nvarchar	128	Name of the Branch involved.
oLOGID	varchar	36	Primary Key. ID of this audit log entry.
nArrayNum	int		Array element number, if the associated field is part of an array.
oPRINSTID	varchar	36	The Project Instance ID of the Process Timeline instance involved
oACTINSTID	varchar	36	The Activity Instance ID of the Timeline Activity instance involved.
sProjectName	nvarchar	256	Name of the timeline involved.
sActivityName	nvarchar	128	Name of the Timeline

COLUMN NAME	DATATYPE	LENGTH	DESCRIPTION
			Activity involved.
oImpersonatedByUID	varchar	36	The User UID of the impersonating user.
sImpersonatedByUsername	nvarchar	256	Name of the user impersonating the user who changed form data.
nAuditType	int		Please see the table below for an enumeration of nAuditType values, as the list is rather lengthy.
sIPAddress	nvarchar	32	IP Address of the User.
oPID	varchar	36	The Project ID of the associated Process Timeline.
sUserID	varchar	64	User ID of the user.
oID	varchar	36	The Object ID of an associated object.
sObjectName	nvarchar	256	The object name.
nObjectType	int		The type of object.
sAuditText	nvarchar	1024	The text of the log entry.
sExternalGUID	nvarchar	256	The External GUID of an associated object/user.
oCASEINSTID	varchar	36	The Case Instance ID of an associate Case

COLUMN NAME	DATATYPE	LENGTH	DESCRIPTION
			instance.
oCASEPROPID	varchar	36	The Case Property ID of an associated Case property.
sPropertyName	varchar	64	The Case property name.

tblBusinessValue

This table contains information describing a Business Value.

COLUMN NAME	DATATYPE	LENGTH	DESCRIPTION
oBVID	varchar	36	Primary Key. Business Value ID.
bvGroupName	nvarchar	256	BV Group Name.
bvTypeFlag	int		Type of Business Value.
oKVID	varchar	36	The Knowledge View ID of the KView used to generate the value.
sKVInput	nvarchar	1024	Data input from the KView.
oDBID	varchar	36	The Database ID of the database connection to use.
sSQL	varchar	MAX	SQL used to generate the value.
sRESTURL	varchar	1024	The URL of the REST data source.
fRESTGET	tinyint		Flag to determine if the GET operation

COLUMN NAME	DATATYPE	LENGTH	DESCRIPTION
			should be used to retrieve REST data.
sRESTUserID	varchar	256	The USER ID for the REST data source.
sRESTPassword	varchar	256	The password for the REST data source.
oRunAsUID	varchar	36	The User UID for the user under whose context the KView Datasource will run.
fRESTJSON	tinyint		Flag to determine if the REST call returns data in JSON format.
oFORMID	varchar	36	The Form ID of an associated Form definition.
oFormCONDSETID	varchar	36	The Condition Set ID of an associated condition set.
oDBID_REST	varchar	36	The Database ID of the REST Datasource.
oDBID_RunAsUID	varchar	36	The User UID of the user whose context will be used to access the Datasource.

tblBusinessValueProperty

This table contains information describing the properties set for a Business Value.

COLUMN NAME	DATATYPE	LENGTH	DESCRIPTION
oBVPID	varchar	36	Primary Key. Busi-

COLUMN NAME	DATATYPE	LENGTH	DESCRIPTION
			ness Value Property ID.
oBVID	varchar	36	Business Value ID.
sPropertyName	nvarchar	256	Name of the property.
nOrder	int		The order in which the property will appear in the UI.
nPropertyType	int		The type of property.
nBVSysVarType	int		Type of value to return.
nBVSysVarString	nvarchar	1024	Value if string.
nBVSysVarNumber	decimal	18,4	Value if numeric.
tBVSysVarDateTime	datetime		Value if date/time.
sDBCColumnName	nvarchar	256	The name of the DB column from which the data will come.
sKVColumnName	nvarchar	256	The name of the KView column from which the data will come.
nKVColumnOper	int		The mathematical operation to perform on the KView column.
sRESTXPath	nvarchar	1024	The XPath XML.
nRESTRResultsMapping	int		Determines how REST data will be added to fields.
sBVSysVarStringEx	nvarchar	MAX	Value if string is

COLUMN NAME	DATATYPE	LENGTH	DESCRIPTION
			longer than 1024 bytes.
oFCID	varchar	36	The Form Control ID of an associated Form Control.

tblCase

This table contains information describing a case.

COLUMN NAME	DATATYPE	LENGTH	DESCRIPTION
oCASEID	varchar	36	Primary Key. Case ID
sInstName	nvarchar	256	Case Instance Name
fPropAudit	tinyint		Flag to determine if properties are audit-able.
sLinkWSID	varchar	1024	The Workspace ID of an associated Work-space.
sCaseGroupName	nvarchar	256	Case Group Name.

tblCaseDashboard

This table contains information describing the Case Dashboard.

COLUMN NAME	DATATYPE	LENGTH	DESCRIPTION
oCASEDASHID	varchar	36	Primary Key. Case Instance ID
oCASEID	varchar	36	Case Property ID
oDASHID	varchar	36	Dashboard ID
sDashboardName	nvarchar	256	Dashboard name
nOrder	int		The display order of the Dashboard.

tblCaseData

This table contains information describing Case property data.

COLUMN NAME	DATATYPE	LENGTH	DESCRIPTION
oCASEINSTID	varchar	36	Primary Key. Case Instance ID
oCASEPROPID	varchar	36	Primary Key. Case Property ID
nDataType	int		Data type enumerator.
nRawDataType	int		Raw data type of the supplied data.
sValue	nvarchar	MAX	Value if string.
nValue	decimal	18,4	Value if numeric.
tValue	datetime		Value if date/time.
sPropertyName	nvarchar	64	Property Name
fEncrypted	tinyint		Flag to determine whether the data is encrypted.
sDisplayString	nvarchar	256	Display string for the data.

tblCaseInstance

This table contains information describing a case Instance.

COLUMN NAME	DATATYPE	LENGTH	DESCRIPTION
oCASEINSTID	varchar	36	Primary Key. Case Instance ID
oCASEID	varchar	36	Case ID

tblCaseProperty

This table contains information describing a case Property definitions.

COLUMN NAME	DATATYPE	LENGTH	DESCRIPTION
oCASEPROPID	varchar	36	Primary Key. Case Instance ID
oCASEID	varchar	36	Case ID
sPropertyName	nvarchar	256	Property Name
sDesc	nvarchar	1024	Property Description
nOrder	int		Property order
nDataType	int		Data type enumerator.
nDefaultSysVarType	int		Data type of the default value.
sDefaultSysVarString	nvarchar	1024	Default value if string.
nDefaultSysVarNumber	decimal	18,4	Default value if numeric.
tDefaultSysVarDateTime	datetime		Default value if date/-time.
sDefaultSysVarStringEx	nvarchar	MAX	Default value - string expression
fEncrypt	tinyint		Flag to determine whether to encrypt the value.
fUnique	tinyint		Flag to determine of the value must be unique.
sDisplayName	nvarchar	256	Display name to use for the Property

tblCat

This table contains information describing categories in a workgroup.

COLUMN NAME	DATATYPE	LENGTH	DESCRIPTION
oCATID	varchar	36	Primary Key. Category's ID
oID	varchar	36	Category's object ID
oPID	varchar	36	Category's partition ID

tblCatAttrib

This table contains information on a category's attribute.

COLUMN NAME	DATATYPE	LENGTH	DESCRIPTION
oCATID	varchar	36	ID of the attribute's category.
oATTID	varchar	36	Primary Key. Attribute's ID.
oID	varchar	36	Primary Key. Attribute's Object ID.
oPID	varchar	36	Attribute's partition ID.
nDataType	int		Data type enumerator.
nRawDataType	int		Raw data type of the value.
sValue	nvarchar	MAX	Value if string.
nValue	decimal	18,4	Value if numeric.
tValue	datetime		Value if date/time.

tblChart

This table contains information for the Chart Object.

COLUMN NAME	DATATYPE	LENGTH	DESCRIPTION
oCHARTID	varchar	36	Primary Key. The ID

COLUMN NAME	DATATYPE	LENGTH	DESCRIPTION
			of the Chart Object.
sTitle	nvarchar	64	Chart Title.
sSkin	nvarchar	64	Chart skin.
oKVID	varchar	36	The Knowledge View ID of the KView to use.
oBVID	varchar	36	The Business Value ID of the Business Value to use.
nChartType	int		The type of chart to display.
fShowLegend	tinyint		Flag to determine whether to show the chart legend.
nHeight	int		Height of the chart.
nHeightType	int		Height type (fixed, auto).
nWidth	int		Width of the chart.
nWidthType	int		Width type (fixed, auto).
nAutoscale	int		Flag to determine whether to autoscale the chart to its container.
fShowCategoryAxisLabels	tinyint		Flag to determine whether to show the category (x-axis) labels.
fShowValueAxisLabels	tinyint		Flag to determine whether to show the

COLUMN NAME	DATATYPE	LENGTH	DESCRIPTION
			value (y-axis) labels.
oKVCOLID_GroupBy	varchar	36	The Knowledge View Column ID of the KView column to Group By.
oBVPID_GroupBy	varchar	36	The Business Value Property ID of the Business Value Property to Group By.
nDateGroupBy	int		Flag to determine whether to Group By date.
nRefreshSecs	int		The number seconds to pass before the chart refreshes automatically.
oFORMID	varchar	36	The Form ID of the Form to associate with the Chart.
oFORMID_GroupBy	varchar	36	The Form ID of the Form to Group By.
sBodyStyle	nvarchar	1024	Styles for Chart body.
sBodyCSS	nvarchar	MAX	CSS stylesheet for body.
oBackgroundImage	varchar	36	Pointer to background image.
sBgName	nvarchar	256	Name of background image.
nBgRepeat	int		Flag to determine whether the back-

COLUMN NAME	DATATYPE	LENGTH	DESCRIPTION
			ground image should tile.
nBgSize	int		Size of image in bytes.
nBgOpacity	int		Opacity percentage of background image.
fShowZeroAxisLabels	tinyint		Flag to show axis labels when there is no data for the axis.
nStepSize	int		Step size to display for Gantt Charts
fOrderByDDID	tinyint		Flag to order data by Dropdown ID.

tblChartGaugeRange

This table contains information for the Chart's gauge range.

COLUMN NAME	DATATYPE	LENGTH	DESCRIPTION
oCHARTGAUGEID	varchar	36	Primary Key. Chart Gauge ID.
oCHARTID	varchar	36	The Chart ID of the parent chart.
nAxis	int		The axis on which to display the range.
nStartingPoint	decimal	18,4	The value where the range starts.
nEndingPoint	decimal	18,4	The value where the range ends.
sColor	nvarchar	64	The range color.
nOrder	int		The display order of

COLUMN NAME	DATATYPE	LENGTH	DESCRIPTION
			the range.

tblChartSeries

This table contains information for the Chart's Series.

COLUMN NAME	DATATYPE	LENGTH	DESCRIPTION
oCHARTSERIESID	varchar	36	Primary Key. Chart Series ID.
oCHARTID	varchar	36	The Chart ID of the parent Chart.
nSeriesType	int		The Chart series type.
sGroupName	nvarchar	256	The group name of the Chart.
nMissingValues	int		Flag to determine display of missing values.
nStackType	int		The Chart stacking setting.
nAxis	int		The Chart's primary axis.
oKVCOLID	varchar	36	Knowledge View Column ID of the column to use for the range.
oBVPID	varchar	36	The Business Value Property ID if the property to use for the range.
sColor	nvarchar	64	Color for series values.
nMarkerType	int		Marker type enu-

COLUMN NAME	DATATYPE	LENGTH	DESCRIPTION
			erator for each value.
nAggregate	int		Flag to determine whether to aggregate values.
nOrder	int		The order in which the series appears in the UI.
fShowNumbers	tinyint		Flag to show the value numbers for each data point.
oCONDSETID	varchar	36	The condition set associated with the series
sSeriesLabel	varchar	MAX	The text label for the series.
sSeriesName	varchar	256	The Series Name.
sToolTip	varchar	MAX	The tool tip that appears when the user mouses over the series.
fShowToolTip	tinyint		Flag to determine whether the tooltip is shown.
nDrillDownOpenLoc	int		Enumerator for the setting to configure where drill-down objects open.
nDrillDownOpenTarget	int		Enumerator for the setting that determines the open target

COLUMN NAME	DATATYPE	LENGTH	DESCRIPTION
sDrilldownTarget	nvarchar	1024	for drill-down objects. The name of the target object to open
fRefreshAfterDrilldown	tinyint		Flag to determine whether the chart refreshes after a drill-down operation.
oFCID	varchar	36	The Form Control ID of an associated Form definition.

tblChartVar

This table contains information for the Chart's Series.

COLUMN NAME	DATATYPE	LENGTH	DESCRIPTION
oCHARTVARID	varchar	36	Primary Key. Chart Var ID.
oCHARTID	varchar	36	The Chart ID of the parent Chart definition.
sName	nvarchar	256	Chart Name.
sDesc	nvarchar	1024	Chart Description.
nOrder	int		Display order.
nSysVarType	int		Flag to determine the System Variable Type.
sDefault	nvarchar	1024	Flag for default display.
fPrompt	int		Flag to show prompt to user.
oDDID	varchar	36	The Document ID of an associated doc-

COLUMN NAME	DATATYPE	LENGTH	DESCRIPTION
			ument.
oFieldID	varchar	36	The Field ID of an associated data field.
nFieldObjType	int		Object type enumerator for the field.

tblComment

This table contains information for Application Event comments.

COLUMN NAME	DATATYPE	LENGTH	DESCRIPTION
oCOMMENTID	varchar	36	Primary Key. Comment ID.
oAPPEVENTID	varchar	36	The Application Event ID for an associated Milestone.
nCommentType	int		Flag to determine comment type.
oDefinitionID	varchar	36	The Object definition ID of an associated object.
oPID	varchar	36	The Process Instance ID of an associated process instance.
oID	varchar	36	The Object ID of an associated object.
oUID	varchar	36	The User UID of an associated user.
tAdd	datetime		Date the comment was added.
oCASEINSTID	varchar	36	The Case Instance ID of an associated Case

COLUMN NAME	DATATYPE	LENGTH	DESCRIPTION
			instance
oFORMINSTID	varchar	36	The Form instance ID of an associated Form instance.
oPROCINSTID	varchar	36	The Process Instance ID of an associated process instance.
oParentCOMMENTID	varchar	36	The Comment ID of the Parent comment for the comment thread.
sGroupNames	nvarchar	1024	Group names to include for display of Milestones.
nIcon	int		Number of the icon to display.
sIconColor	nvarchar	64	Color of the icon to display.
sComment	nvarchar	MAX	The text of the comment
sName	nvarchar	64	Name of the commenting user.
fCondConsumed	tinyint		Condition met flag.
sUserCommentGroup	nvarchar	1024	Group names for the user comments.

tblCondition

This table contains information for a user-created condition.

COLUMN NAME	DATATYPE	LENGTH	DESCRIPTION
oCONDSETID	varchar	36	ID of the condition

COLUMN NAME	DATATYPE	LENGTH	DESCRIPTION
			set of which this condition is a member.
nOrder	int		Evaluation order of the condition.
nAndGroup	int		Determines if the condition is part of an AND condition set.
fPrompt	tinyint		Flag to determine if the user prompt is displayed.
nLSysVarType	int		Flag to determine the System Variable Type.
sLSysVarString	nvarchar	1024	The System Variable string value.
nLSysVarNumber	decimal	18,4	The System Variable numeric value.
tLSysVarDateTime	datetime		The System Variable datetime value.
nConditional	int		Flag to mark whether the evaluation is conditional.
nRSysVarType	int		Flag to determine the return system variable type.
sRSysVarString	nvarchar	1024	The return System Variable string value.
nRSysVarNumber	decimal	18,4	The return System Variable numeric value.
tRSysVarDateTime	datetime		The return System

COLUMN NAME	DATATYPE	LENGTH	DESCRIPTION
			Variable datetime value.
oCONDID	varchar	36	Primary Key. ID of the condition
sLSysVarStringEx	nvarchar	MAX	Extended string value for the System Variable.
sRSysVarStringEx	nvarchar	MAX	Extended string value for the returned data.

tblConditionSet

This table contains information about all conditions associated with an item.

COLUMN NAME	DATATYPE	LENGTH	DESCRIPTION
oCONDSETID	varchar	36	Primary Key. ID of the condition set.
oPID	varchar	36	The Partition ID of an associated partition.
sDesc	nvarchar	1024	Description of the condition set
oContainerID	varchar	36	The container object that contains the condition set.
fAllowClientSide	tinyint		Flag to run on the client instead of server.

tblContent

This table contains information for objects in the content list.

COLUMN NAME	DATATYPE	LENGTH	DESCRIPTION
oID	varchar	36	Primary Key. Object ID.

COLUMN NAME	DATATYPE	LENGTH	DESCRIPTION
nType	int		Object's type (Form, document, etc.).
nSubType	int		Object subtype.
oPID	varchar	36	The Partition ID of an associated partition.
sName	nvarchar	256	Object's name.
sDesc	nvarchar	256	Object's description.
oCreateUser	varchar	36	The User UID of user that created the object.
oUpdateUser	varchar	36	The User UID of user that last updated the object.
tCreate	datetime		Time the object was created.
tUpdate	datetime		Time the object was updated.
tDelete	datetime		Time the object was deleted.
nIcon	int		ID of the icon for the object.
nSize	int		The file size of the object in bytes.
nVersion	int		Version number of the object.
fDoNotShowOnRun	tinyint		Flag to determine if the object appears in "items I can Run".
v6_id	int		Not Used
nSize2	bigint		Files size of the object

COLUMN NAME	DATATYPE	LENGTH	DESCRIPTION
			if the size exceeds the "int" data type.
sUserName	nvarchar		String of the name of the user who created this object. Kept in case the user is deleted from the system.
oLockUID	varchar	36	The ID of a content lock placed on the object.
tLockSince	datetime		The datetime the content lock was placed on the object.
sIconColor	nvarchar	64	The icon color for the object.
tImport	datetime		The date the object was last imported.

tblContentMap

This table contains the parent / child relationships between objects in the content list.

COLUMN NAME	DATATYPE	LENGTH	DESCRIPTION
oPID	varchar	36	Partition's ID
oChild	varchar	36	Primary Key. ID of an object's child
nChildType	int		Child's object type (document, Form, etc.).
oParent	varchar	36	Primary Key. ID of object's parent.

COLUMN NAME	DATATYPE	LENGTH	DESCRIPTION
nParentType	int		Parent object's type.
nMapType	int		Map type for the object,
tAdd	datetime		date the object was added.
sGroupName	nvarchar	256	Group name of the object

tblDashboard

This table contains the information about Dashboard objects.

COLUMN NAME	DATATYPE	LENGTH	DESCRIPTION
oDASHID	varchar	36	Primary Key. Dashboard ID.
sColor	nvarchar	64	Foreground color of the Dashboard.
sBackground	nvarchar	1024	Background to display for the Dashboard.
sCSSClass	nvarchar	MAX	Custom CSS applied to the Dashboard.
nFixedHeight	int		Flag to determine if the height is fixed.
nFixedWidth	int		Flag to determine if the width is fixed.

tblDashboardPortlet

This table contains the information about Dashboard portlets.

COLUMN NAME	DATATYPE	LENGTH	DESCRIPTION
oDASHPORTID	varchar	36	Primary Key. Dashboard Portlet ID

COLUMN NAME	DATATYPE	LENGTH	DESCRIPTION
oDASHID	varchar	36	Dashboard ID.
sTitle	nvarchar	256	Portlet title text.
fShowTitle	tinyint		Flag to show title.
sContent	nvarchar	MAX	Portlet content.
nContentType	int		Type of content.
sLeft	nvarchar	32	The location, in pixels, from the left edge of the screen, where the left side of the object will be displayed.
sTop	nvarchar	32	The location, in pixels, from the top edge of the screen, where the top side of the object will be displayed.
sHeight	nvarchar	32	Object's height.
sWidth	nvarchar	32	Object's width.
nIndex	int		Object's zIndex, or layer.
sPortletName	nvarchar	256	Portlet name
nRefresh	int		The refresh interval, in seconds, for the object.
sCSSClass	nvarchar	256	CSS class name(s) for the object, applied from custom CSS styling.
nIcon	int		The number of the

COLUMN NAME	DATATYPE	LENGTH	DESCRIPTION
			icon associated with the object.
nDisplay	int		Flag for the Object's display.
sIconColor	nvarchar	64	Icon color.
sContentType	nvarchar	32	Type of Content List item displayed in the portlet.
sContentTarget	nvarchar	1024	The drill-down target for the object.
sContentOpens	nvarchar	32	The content opened via drill-down.
sTimeZone	nvarchar	32	Time Zone of the user.
sFormat	nvarchar	32	Object format
sGroupNames	nvarchar	1024	Group name(s) for the object.
nAppEvContentType	int		Application Events/Milestones associated with the object.
fUserComments	tinyint		Flag to include user comments.
sCommentGroupName	nvarchar	256	Group name of user comments.

tblDataList

This table contains the information about Data List Form Control objects.

COLUMN NAME	DATATYPE	LENGTH	DESCRIPTION
oDLID	varchar	36	Primary Key. Data

COLUMN NAME	DATATYPE	LENGTH	DESCRIPTION
			List ID
oSource	varchar	36	The source object of the Data List.
fFieldSync	tinyint		
fGroupingAllow	tinyint		
fIconShow	tinyint		
sDataExpand	nvarchar	MAX	


tblDataListField

This table contains the information about the fields in a Data List Form Control

COLUMN NAME	DATATYPE	LENGTH	DESCRIPTION
oDLFID	varchar	36	Primary Key. Field ID
oDLID	varchar	36	Data List ID
oFieldID	varchar	36	
nDataType	int		
nFilterType	int		
nVisualizationType	int		
sCustom	nvarchar	MAX	
nActionType	int		
nActionLocation	int		
sActionData	nvarchar	MAX	
sName	nvarchar	256	
nPosition	int		

tblDayPass

This table contains the information about Day Pass users, and is part of the licensing scheme for Process Director. It is used only to record activity for licensed Day Pass Users.

 This table, and its data, contain license-related information and shouldn't be modified without assistance from BP Logix.

COLUMN NAME	DATATYPE	LENGTH	DESCRIPTION
oDAYPASS	varchar	36	Primary Key. Day Pass ID
sDayPass	nvarchar	256	
tEntered	datetime		
oUserEntered	varchar	36	
sDayPass2	nvarchar	256	

tblDBConnection

This table contains information for a database connection.

COLUMN NAME	DATATYPE	LENGTH	DESCRIPTION
oDBID	varchar	36	Primary Key. This connection's ID.
sProvider	nvarchar	512	Database provider (e.g. SQL Server, Oracle, etc.).
sConnection	nvarchar	2000	Address of the database.
nDBType	int		Type of database (e.g. SQL Server, Oracle, MySQL, etc.).
sTableList	nvarchar	2000	List of Database tables.
sSharePoint_SiteURL	nvarchar	1024	SharePoint site URL.
sSharePoint_UserID	nvarchar	128	SharePoint User ID.
sSharePoint_Password	nvarchar	64	SharePoint Password.
sSharePoint_Domain	nvarchar	256	SharePoint Domain.

COLUMN NAME	DATATYPE	LENGTH	DESCRIPTION
sAccessToken	nvarchar	2000	OAuth access token.
sAccessTokenSecret	nvarchar	2000	OAuth access secret.
sAccessUserid	nvarchar	64	UserID used to access authenticate connection
sAccessPassword	nvarchar	2000	Password to authenticate connection
sClientToken	nvarchar	2000	OAuth client token.
sClientSecret	nvarchar	2000	OAuth client secret.
fEnableCache	tinyint		Flag to enable caching on the Data-source
nCacheSeconds	int		The number of seconds to keep the cached data
sKeyAuth	nvarchar	MAX	authorization key value
sAccessToken2	nvarchar	MAX	Secondary values.
sAccessTokenSecret2	nvarchar	MAX	Secondary values.
sClientToken2	nvarchar	MAX	Secondary values.
sClientSecret2	nvarchar	MAX	Secondary values.
sSharePoint_UserID2	nvarchar	2000	Secondary values.
sSharePoint_Password2	nvarchar	2000	Secondary values.

tblDocument

This table contains information for about a document stored in the content list.

COLUMN NAME	DATATYPE	LENGTH	DESCRIPTION
oDID	varchar	36	Primary Key. Document's ID

COLUMN NAME	DATATYPE	LENGTH	DESCRIPTION
oFORMID	varchar	36	Form definition ID.
nLatestVersion	int		Latest version number of the document.
sFileName	nvarchar	512	Document's file name.
oManagedObj	varchar	36	Object ID of an associated managed object.
oWebViewableObj	varchar	36	Flag to determine if this is a web-viewable object.
fCheckedOut	tinyint	1	Boolean reflecting whether the document is checked out or not.
nAnnotationType	int		Annotation types for Collaborative Document Markup.
nDocInHistory	int		History enumerator.
oCheckoutUser	varchar	36	The User UID of the user who has checked out the document.
fEditing	tinyint	1	Flag to determine if document is being edited.
fConceptShare	tinyint	1	Flag to determine if this is a ConceptShare document.
nCS_WID	Int		ConceptShare attrib-

COLUMN NAME	DATATYPE	LENGTH	DESCRIPTION
nCS_FID	Int		ute. ConceptShare attribute.
nCS_Status	Int		ConceptShare attribute.
tCS_UploadStart	datetime		ConceptShare attribute.
sDALAssetID	nvarchar	128	The external ID of the document in the DAL.
sExternalID	nvarchar	1024	External ID of the document.
nDBType	Int		Type of database.
oDBID	varchar	36	The Database ID of an associated Data-source.
nConceptShare	int		ConceptShare attribute.
fUploadPending	tinyint		Flag to determine if the document has an upload pending.
nUploadPercent	int		Percent uploaded.
tUploadLastRcvd	datetime		Last upload date/-time.

tblDocVersion

This table contains records for every version of a document or form definition.

COLUMN NAME	DATATYPE	LENGTH	DESCRIPTION
oDID	varchar	36	Primary Key. Document's ID.
nVersion	int		Primary Key. Version

COLUMN NAME	DATATYPE	LENGTH	DESCRIPTION
			number of this document record.
oManagedObj	varchar	36	Object ID of an associated managed object.
oWebViewableObj	varchar	36	Flag to determine if this is a web-viewable object.
oCreateUser	varchar	36	User who created this document version.
tCreate	datetime		Time this document version was created.
sDesc	nvarchar	1024	Description of this version of the document.
nCS_DID	int		ConceptShare attribute.
nCS_PrevDID	int		ConceptShare attribute.
nCS_Status	int		ConceptShare attribute.
fHTMLForm	tinyint		Flag to determine of the Form is an Online Form Designer form.

tblDropDown

This table contains information for a Dropdown Object.

COLUMN NAME	DATATYPE	LENGTH	DESCRIPTION
oDDID	varchar	36	Primary Key. ID of the Dropdown Object

tblDropDownValue

This table contains information form an item stored within a Dropdown Object.

COLUMN NAME	DATATYPE	LENGTH	DESCRIPTION
oDDVALUEID	varchar	36	Primary Key. ID of the item.
oDDID	varchar	36	The Dropdown ID of the parent Dropdown Object for this value.
sDDDdisplay	nvarchar	256	String displayed when attached to a dropdown field.
sDDValue	nvarchar	256	String value of the Dropdown Object item.
nValueSysVarType	int		Data type of the value.
sValueSysVarString	nvarchar	1024	String value to store.
nOrder	int		The object order.

tblEmailUnsubscribe

This table contains information about users that unsubscribe to email notifications.

COLUMN NAME	DATATYPE	LENGTH	DESCRIPTION
oEUID	varchar	36	Primary Key. ID of the item.
oUID	varchar	36	The User UID of the user.
oPROCID	nvarchar	36	The Process ID of an associated process.
oPROCINSTID	nvarchar	36	The Process Instance ID of an associated process instance.

COLUMN NAME	DATATYPE	LENGTH	DESCRIPTION
oTASKID	nvarchar	36	The Task ID of an associated Task.
oTASKINSTID	nvarchar	36	The Task Instance ID of an associated Task Instance.
nObjectType	int		Object type enumerator.
tAdd	datetime		Date added.

tblFDF

This table contains information about the Collaborative Document Markup feature.

COLUMN NAME	DATATYPE	LENGTH	DESCRIPTION
oFDFID	varchar	36	Primary Key. ID of the item.
oOID	varchar	36	The Object ID of the parent object.
oDID	nvarchar	36	The Document ID of an associated document.
oUID	nvarchar	36	The User UID of the editing user.
oPID	nvarchar	36	The Process Instance ID of an associated process instance.
tCreate	datetime		Create date of the markup.
tUpdate	datetime		Last update date.
sFDF	nvarchar	MAX	Markup contents.

tblFolder

This table contains information for a folder in the content list.

COLUMN NAME	DATATYPE	LENGTH	DESCRIPTION
oFID	varchar	36	Primary Key. ID of the folder
oAutoNewWFID	varchar	36	Workflow Instance for automated actions when a new object is created in the folder.
oAutoEditWFID	varchar	36	Workflow Instance for automated actions when an object is edited in the folder.
oAutoMoveWFID	varchar	36	Workflow Instance for automated actions when an object is moved into the folder.
nDefDocInHistory	int		Document history enumerator.

tblForm

This table contains information about a Form definition.

COLUMN NAME	DATATYPE	LENGTH	DESCRIPTION
oFORMID	varchar	36	Primary Key. Form definition ID.
oDID	varchar	36	The Document ID the form template, if Word form.
sInstName	nvarchar	256	Instantiated Form name.
oStartWFID	varchar	36	ID of the Workflow

COLUMN NAME	DATATYPE	LENGTH	DESCRIPTION
			started when the Form is submitted.
sLinkWFID	varchar	256	List of Workflow IDs to which the Form is linked.
oScriptID	varchar	36	The Script ID of an attached Form script.
fErrorPopup	tinyint		Flag to determine whether to display validation errors as popups.
fCancelPopup	tinyint		Flag to determine whether to display a warning when a user cancels form changes.
fFieldAudit	tinyint		Flag to determine whether or not to audit Form field changes.
fCT_Form	tinyint		Flag to determine whether or not the form is a Custom Task form.
fCT_Workflow	tinyint		Flag to determine whether the form is a Workflow Custom Task.
fCT_Rule	tinyint		Flag to determine whether or not the form is a Business

COLUMN NAME	DATATYPE	LENGTH	DESCRIPTION
fEmail	tinyint		Rule Custom Task. Flag to determine if this form is an email template.
tObjChange	datetime		Datetime the object was last edited.
sStyleEnabled	nvarchar	256	Styles for enabled fields.
sStyleDisabled	nvarchar	256	Styles for disabled fields.
sStyleRequired	nvarchar	256	Styles for required fields.
sStyleError	nvarchar	256	Styles for fields with errors.
fDisabledAsText	tinyint		Boolean determining whether or not to show the disabled fields as text.
nEnabled	int		Enumerator for determining when the field is enabled.
nEnabledCond	int		Enumerator for determine how conditions will be applied for enabling the field.
oEnabledCONDSETID	varchar	36	Condition Set ID for enabled conditions.
sGroupName	nvarchar	256	Name of the group the Form belongs to.
fShowOneError	tinyint		Show one validation

COLUMN NAME	DATATYPE	LENGTH	DESCRIPTION
			error, instead of all of them.
sLinkPRID	varchar	256	List of timeline ID's the Form links to.
oStartPRID	varchar	36	ID of the timeline the Form starts.
fCT_Project	tinyint		Determines if the form is a timeline Custom Task.
fUseVB	tinyint		Boolean deciding whether to use VB script instead of C#.
fHideDisabledButtons	tinyint		Boolean determining whether disabled buttons should be hidden on the Form
fEnableConcurrence	tinyint		Enables the ability for multiple users to make changes to the form at the same time.
fEnableUserLock	tinyint		Determines whether a user can lock this form or not.
oReadOnlyCONDSETID	varchar	36	Read-only Condition Set ID.
oCASEID	varchar	36	Case definition to create on new form submission.
fSwitchToCaseMode	tinyint		Flag to switch to case mode for the Form.

COLUMN NAME	DATATYPE	LENGTH	DESCRIPTION
fRemoveFromCaseOnSub	tinyint		Flag to remove from the existing case and create a new case on submission.
fHTMLForm	tinyint		Flag to determine if this is an Online Form Designer Form.
sBodyStyle	nvarchar	256	Style tags for the Form's body from custom CSS.
sBodyCSS	nvarchar	256	Custom CSS for the body.
oBackgroundImage	varchar	36	Object ID of the background image.
sBodyCSS2	nvarchar	MAX	Contains the manual CSS styles.
fEnableFormDataCache	tinyint		Flag to determine if Form Data Caching is enabled.
sBgName	nvarchar	256	Name of the background image object.
nBGRepeat	int		Flag for tiling the background image object.
nBgSize	int		Size of the background image object.
fParmNoHome	tinyint		Flag for setting the nohome URL parameter.
sParmCompletePageURL	nvarchar	1024	Text of the com-

COLUMN NAME	DATATYPE	LENGTH	DESCRIPTION
			pletpageurl URL parameter.
sParmCompletePageText	nvarchar	1024	Text of the completepagetext URL parameter.
fParmSkipCompletePage	tinyint		Flag to determine if the complete page should be skipped.
sLockGroup	nvarchar	256	Name(s) of the Lock Groups applied to the Form.
nBgOpacity	int		The integer percentage of the opacity for the background image object.
fDisableAutoFriendlyName	tinyint		Flag to turn off automatic Friendly Name generation

tblFormControl

This table contains information about a Form control.

COLUMN NAME	DATATYPE	LENGTH	DESCRIPTION
oFCID	varchar	36	Primary Key. Form control's ID.
oFORMID	varchar	36	The Form ID of the Parent Form.
sFieldName	nvarchar	64	Name of the form control.
sToolTip	nvarchar	1024	Form control's tooltip.

COLUMN NAME	DATATYPE	LENGTH	DESCRIPTION
sDisplayName	nvarchar	256	Form control's display name.
nControlType	int		Form control type (e.g. date control, section end, etc.).
nDataType	int		Form data type.
nDefaultSysVarType	int		Default system variable returns type.
sDefaultSysVarString	nvarchar	256	Default system variable returns string.
nDefaultSysVarNumber	decimal	18,4	Default system variable returns number.
tDefaultSysVarDateTime	DateTime		Default system variable returns date/time.
oParentSectFCID	varchar	36	Control's parent section ID.
oParentRepeaterFCID	varchar	36	Control's parent repeater (i.e. array) ID.
oFillATTID	varchar	36	The Attribute ID of the Meta Data attribute associated with the field.
oDropDownATTID	varchar	36	The Attribute ID of the Meta Data attribute to use to fill the field's options.
fSync	tinyint	1	Flag to determine whether field will

COLUMN NAME	DATATYPE	LENGTH	DESCRIPTION
			sync with process package.
fEvent	tinyint	1	Flag to determine whether control is an event field.
fDeleted	tinyint	1	Flag to determine if the form field has been deleted.
nEnabled	int		Enumerator for enabled settings.
nEnabledCond	int		Enumerator for enabling conditions.
oEnabledCONDSETID	varchar	36	The Condition Set ID of the Condition Set for enabling the control.
nVisible	int		Flag to set the control visible.
nVisibleCond	int		Flag to set the control visible with conditions.
oVisibleCONDSETID	varchar	36	The Condition Set ID of the Condition Set for showing the control.
nRequired	int		Flag to set the control required.
nRequiredCond	int		Flag to set the control required with conditions.

COLUMN NAME	DATATYPE	LENGTH	DESCRIPTION
oRequiredCONSETID	varchar	36	Object ID of the Condition Set for requiring the control.
sStyleCond	int		Flag to set the control as styled with conditions.
oStyleCONDSETID	varchar	36	Object ID of the Condition Set for styling the control.
fEncrypt	tinyint	1	Boolean determining whether or not the form field's data is encrypted.
oDDID	varchar	36	The Dropdown ID of an associated Drop-down Object.
nMaxLen	int		Maximum form field length.
nMinLen	int		Minimum form field length.
sCulture	varchar	64	The Culture string to apply to the control.
sRegularExpression	nvarchar	256	Optional regular expression to validate the form control.
sDefaultSysVarStringEx	nvarchar	MAX	Extended string value if the value is more than 256 bytes.
oFillCASEPROPID	varchar	36	The Case Property ID to use for storing the

COLUMN NAME	DATATYPE	LENGTH	DESCRIPTION
			field's value.
sMask	nvarchar	256	Input mask to apply to the control.
fBulkEdit	tinyint		Flag to enable bulk editing.

tblFormData

This table contains all data for all Form instances.

COLUMN NAME	DATATYPE	LENGTH	DESCRIPTION
oFORMINSTID	varchar	36	Primary Key. Form instance's ID.
oFCID	varchar	36	Form control's ID.
nArrayNum	int		Primary Key. Array element number, if this field is part of an array.
nDataType	int		This form field's actual data type in SQL/Oracle.
nRawDataType	int		The Form control's raw data type.
sValue	nvarchar	Max	This form field's value (if string).
nValue	decimal	18,4	This form field's value (if integer).
tValue	datetime		This form field's value (if datetime).
sDisplayString	nvarchar	256	This form field's display string for controlsthat have

COLUMN NAME	DATATYPE	LENGTH	DESCRIPTION
			different Values and Display strings, e.g., Dropdown controls.
fDeleted	tinyint		Boolean reflecting whether or not the form field has been deleted.
sFieldName	varchar	64	Form field's name.
fEncrypted	tinyint	1	Boolean determining whether or not the form field's data is encrypted
nIDENT	bigint		
sValueSearch	nvarchar	256	

tblFormDataSet

This table contains dataset data for a Form instance.

COLUMN NAME	DATATYPE	LENGTH	DESCRIPTION
oFORMDATASETID	varchar	36	Primary Key. Form dataset's ID.
oParent	varchar	36	Parent object's ID.
nOrder	int		
oCONDSETID	varchar	36	Condition set ID.
nEventType	int		Form control event type.
oEventFCID	varchar	36	Form Control Event ID.
oFCID	varchar	36	Form Control ID.
nValueSysVarType	int		Value if integer.
sValueSysVarString	nvarchar	1024	Value if String.

COLUMN NAME	DATATYPE	LENGTH	DESCRIPTION
nValueSysVarNumber	decimal	18,4	Value if decimal.
tValueSysVarDateTime	datetime		Value if datetime.
sValueSysVarStringEx	nvarchar	MAX	Value if long string.
sAtRowNumber	nvarchar	1024	Value at row number, if in an array.
nDSType	int		Dataset type
oBVPID_DD_Value	varchar	36	Business Value PID value.
nDDValNotExist	int		Flag to determine if a Dropdown value exists.
sDDEmptyEntry	nvarchar	1024	The value to store for an empty Dropdown selection.
oCASEPROPID	varchar	36	Case property ID if stored in a case.

tblFormInstance

This table contains data about an instance of a Form.

COLUMN NAME	DATATYPE	LENGTH	DESCRIPTION
oFORMINSTID	varchar	36	Primary Key. Form Instance's ID
oFORMID	varchar	36	ID of the Form this is an instance of.
nCT_MappedTo	int		Flag to set if the Form Instance is mapped to a Custom Task.
oCT_FCID	varchar	36	FCID of the Custom Task.
oCT_CONDSETID	varchar	36	Condition Set ID for

COLUMN NAME	DATATYPE	LENGTH	DESCRIPTION
			the Custom Task.
oInUseID	varchar	36	
tInUse	datetime		Time the form was instantiated
nCT_Order	int		Order of Custom Tasks that are mapped.
sCT_Desc	nvarchar	1024	Custom Task Description set in the Custom Task Mapping tab.
tLockInUse	datetime		Datetime the lock was implemented.

tblFormLock

This table contains data about a lock set on a form definition.

COLUMN NAME	DATATYPE	LENGTH	DESCRIPTION
oLOCKID	varchar	36	Primary Key. ID of the Form lock.
oFORMINSTID	varchar	36	Form Instance ID.
oInUseUID	varchar	36	User UID of the user who has opened the form for editing.
tInUse	datetime		Datetime the Form instance was opened for editing.
tLockInUse	datetime		Datetime the lock was implemented.
sLockGroup	nvarchar	256	Lock groups for the form instance.

tblGoal

This table contains information for a Process Director Goal.

COLUMN NAME	DATATYPE	LENGTH	DESCRIPTION
oGOALID	varchar	36	Primary Key. The ID of the Goal.
sFrequency	nvarchar	MAX	The frequency with which the goal value is calculated
fMatchAll	tinyint		Match all Values
fActive	tinyint		Whether the goal is active
sGoalGroupName	nvarchar	256	The group name of the Goal
tLastEvaluation	datetime		When the Goal was last evaluated
tNextRun	datetime		When the Goal will run next
sGoalValue	nvarchar	1024	The Goal value
sGoalValuePrev	nvarchar	1024	The value of the previous goal evaluation
fRunAlways	tinyint		Flag to always run the Goal.
oRunAsUID	varchar	36	The user context to run under
oDBID_RunAsUID	varchar	36	User context for database connections.

tblGoalAction

This table contains information for a Process Director Goal's actions.

COLUMN NAME	DATATYPE	LENGTH	DESCRIPTION
oGOALACTID	varchar	36	Primary Key. The ID of the Goal action.
oGOALID	varchar	36	The ID of the Goal.
oCONDSETID	varchar	36	The ID of the Condition Set for the action.
nActionType	int		The action type of the Goal action.
oID	varchar	36	Object ID.
sResult	nvarchar	1024	The result of the Goal action.
nOrder	int		The order of the Goal action.
sKVInput	nvarchar	1024	Knowledge View input value

tblGroup

This table contains information about user groups.

COLUMN NAME	DATATYPE	LENGTH	DESCRIPTION
oGID	varchar	36	Primary Key. Group's ID.
sName	nvarchar	256	Group's Name.
sDesc	nvarchar	1025	Group's Description.
sExternalGUID	nvarchar	256	Group's external GUID for AD sync.
oADID	varchar	36	The ID of the Group's Active Directory Synchronization Profile in Process Director.
fDisabled	tinyint		Flag reflecting

COLUMN NAME	DATATYPE	LENGTH	DESCRIPTION
			whether or not the group is disabled.
fSync	tinyint		Flag to set this group to sync with AD.
fPartitionAdmin	tinyint		Flag to set group members as Partition Admins.
nAuthType	int		Group's authentication type

tblIdentity

This table contains all the "next" values for the unique sequence number groups (e.g. SEQ_NUM).

COLUMN NAME	DATATYPE	LENGTH	DESCRIPTION
sTableName	nvarchar	64	Sequence Number group name
nSequence	int		Sequence number.

tblImportDB

This table contains information for importing data from a database.

COLUMN NAME	DATATYPE	LENGTH	DESCRIPTION
oDID	varchar	36	Primary Key. Document ID.
oDBID	varchar	36	ID of the database.
sTablePrefix	nvarchar	64	Prefix for data from this database.
fDropTablesFirst	tinyint		Should the importing database's tables be dropped first?
fDeleteRowsFirst	tinyint		Should the rows' data

COLUMN NAME	DATATYPE	LENGTH	DESCRIPTION
			in the importing database be cleared first?
fCreateTables	tinyint		Do tables need to be created?
fAutoImport	tinyint		Boolean determining whether the data is automatically imported.

tblKeyValue

This table stores key/value pairs used for various product features.

COLUMN NAME	DATATYPE	LENGTH	DESCRIPTION
sKEY	varchar	36	Primary Key. Key for the pair.
sValue	nvarchar	MAX	The Value for the pair.

tblKView

This table contains information for a Knowledge View.

COLUMN NAME	DATATYPE	LENGTH	DESCRIPTION
oKVID	varchar	36	Primary Key. ID of the Knowledge View.
sLinkWFID	varchar	256	ID of Workflow linked to the KView.
sLinkFORMID	varchar	256	ID of form linked to KView.
oScriptDID	varchar	36	ID of the script linked to the KView.
oReportDID	varchar	36	ID of the report linked to the KView.

COLUMN NAME	DATATYPE	LENGTH	DESCRIPTION
oFilterCONDSETID	varchar	36	ID of the Condition Set linked to the KView.
nNavigationType	int		Sets the navigation type, i.e., none, folder, meta data.
oNavigationID	varchar	36	Object ID for the navigation object.
nMaxResults	int		Maximum number of results the KView should return.
nDisplayIconsFlag	int		Flag to display action icons.
nCreateFlag	int		Flag to allow users to create objects.
nCheckboxActionFlag	int		Flag enable users to perform checkbox actions
nObjectTypesFlag	int		Flag to include object types
nKViewType	int		The Knowledge View's type (e.g. Content List, Task List, etc.)
nClickAction	int		Flag to enable action buttons.
nHowToOpen	int		Defines how the knowledge should open (in a popup window, inline, etc.)

COLUMN NAME	DATATYPE	LENGTH	DESCRIPTION
nSortColumn	int		Defines how the Knowledge View should sort the data
fSortDESC	tinyint		Should the KView sort the data in reverse?
nResultType	int		Type of result the KView should return.
fShowExcel	tinyint		Flag to show the Excel export icon.
fShowCSV	tinyint		Flag to show the CSV export icon.
fShowRunWf	tinyint		Flag to show the Run Process icon.
nChartOrientation	int		Sets the chart orientation.
nChartSize	int		Sets the chart size
nChartGroupColumn	int		Sets the grouping column for the chart.
nChartGroupType	int		Sets the grouping type for the chart.
sChartSkin	nvarchar	64	Sets the predefined chart skin to use.
fChartDualY	tinyint		Sets whether the chart has a dual axis.
fChartHideLegend	tinyint		Should the chart hide the legend?
fChartAutoResize	tinyint		Should the chart automatically resize to fit the frame's dimensions?

COLUMN NAME	DATATYPE	LENGTH	DESCRIPTION
fRunImmed	tinyint		Set the KView to run immediately.
nTaskTypesFlag	int		Enables task types.
sDisplayDesc	nvarchar	Max	Knowledge View's description.
sInstName	nvarchar	256	Defines the format for naming an instance of the KView
nRefreshSecs	int		Number of seconds between each refresh.
fRefreshOnFormSave	tinyint		Should the KView refresh when an associated form is saved?
sLinkPRID	varchar	256	ID of linked processes.
oRunWFID	varchar	36	Process to run for the rows.
fExportAllFormFields	tinyint		Sets whether to export all fields in the KView when exported.
nChartSizeWidth	int		Default width of the chart in pixels
nChartSizeHeight	int		Default height of the chart in pixels
fFindFormTask	int		Open forms in Task context.
nHeaderOptions	int		Enable header options

COLUMN NAME	DATATYPE	LENGTH	DESCRIPTION
nFilterOptions	int		Enable filter options.
fSkipDisplayMaxResults	tinyint		Flag to halt running the KView if the number of results exceeds the maximum.
sLinkCASEID	nvarchar	256	Case ID of linked case.
fIgnoreCaseMode	tinyint		Set the KView to ignore Case context.
nTargetPortlet	int		The target portlet for display.
fEnableFormDataCache	tinyint		Flag to use form cache data
nCalendarViewInitial	int		Initial calendar view.
nCalendarColumnSubject	int		Column to use as the subject of the calendar item.
nCalendarColumnStart	int		Column to use as the start datetime of the calendar item.
nCalendarColumnEnd	int		Column to use as the end datetime of the calendar item.
nCalendarColumnColor	int		Column to use as the color of the calendar item.
sSkin	nvarchar	64	ID of the predefined skin to use for the Calendar display.

COLUMN NAME	DATATYPE	LENGTH	DESCRIPTION
fClassicMode	tinyint		Show the KView in legacy mode.
oDBID	varchar	36	ID of the Datasource to use for exporting KView data to a database.
sTableName	nvarchar	256	Table name of exported data.
fShowDatabase	tinyint		Flag to show the database.
oFID	varchar	36	Folder ID to export the KView data.
sExportName	nvarchar	256	Folder name of export file.
sCompleteURL	nvarchar	1024	URL to display when export is complete.
sSaveAsName	nvarchar	256	File name of export file.
oDBID_RunASUID	varchar	36	User UID of the user context to use when exporting to a database.
fEnableInlineEditing	tinyint		Enable Form data to be edited inline in the KView grid.
sCalendarViewStart	nvarchar	1024	Set the start date for Calendar KViews.
nInterfaceVersion	int		Turns on the v6.X user interface styling.

tblKViewColumn

This table contains information for a column definition in a Knowledge View.

COLUMN NAME	DATATYPE	LENGTH	DESCRIPTION
oKVID	varchar	36	ID of the KView this column belongs to.
nColumnNum	int		Column number.
sName	nvarchar	256	Column's name.
nDisplay	int		Flag to display the column
nSysVarType	int		Type of data returned.
sSysVarString	nvarchar	1024	Value if string.
oSysVarID	varchar	36	Object ID of the value.
nChartSeriesValue	int		Value in chart.
nChartSeriesType	int		Chart series type.
sSysVarStringEx	nvarchar	MAX	Value if long string
oKVCOLID	varchar	36	Primary Key. Column ID.
fAllowInPlaceEdit	tinyint		Flag to enable in-place editing of this column in the KView grid.

tblKViewNav

This table contains configuration information for a Knowledge View navigation tab.

COLUMN NAME	DATATYPE	LENGTH	DESCRIPTION
oKVID	varchar	36	Primary Key. ID of the Knowledge View attached.
nLevel	int		Navigation level of the item.
nSysVarType	int		Data type of the item.

COLUMN NAME	DATATYPE	LENGTH	DESCRIPTION
oSysVarID	varchar	36	Object ID of the navigation item.

tblLog

This table contains configuration information for each log entry.

COLUMN NAME	DATATYPE	LENGTH	DESCRIPTION
oLOGID	varchar	36	Primary Key. ID of the log record.
oLogEventID	varchar	36	ID of the log event.
oPID	varchar	36	ID of the Partition.
sLogDefID	nvarchar	64	ID of the log definition.
nLogDefType	int		The type of log record.
oLogObjID	varchar	36	Object ID of the log.
nLogObjType	int		The object type of the log.
nMsgType	int		The message type of the log message.
oID	varchar	36	Object ID of the referenced object.
sName	nvarchar	256	Name of the referenced object.
nObjectType	int		Object type of the referenced object.
oParentID	varchar	36	The ID of the Parent Object.
nParentObjType	int		Type Object type of the parent object.
sMessage	nvarchar	1024	Log Message

COLUMN NAME	DATATYPE	LENGTH	DESCRIPTION
tCreate	datetime		Datetime the log message was created,

tblLogEvent

This table contains configuration information for each event that prompts a log entry. An event will be a single instance of an import, goal evaluation, or AD sync run.

COLUMN NAME	DATATYPE	LENGTH	DESCRIPTION
oLogEventID	varchar	36	Primary Key. ID of the log event.
tEventTime	datetime		The time the event occurred
oPID	varchar	36	ID of the Partition
oID	varchar	36	The ID of the referenced object.
sName	nvarchar	256	The name of the referenced object.
oUID	varchar	36	The UID of the user who invoked the event
sUserID	nvarchar	64	The UserID of the user who invoked the event
nLogEventType	int		The type of log item.

tblLogMonitoring



This feature is currently under development, and isn't operational.

This table contains the information about log monitoring directives that are configured on the system.

COLUMN NAME	DATATYPE	LENGTH	DESCRIPTION
oLMID	varchar	36	Primary Key. Log monitor ID.
fEnabled	tinyint		Flag to denote if the monitor is active.
sDescription	nvarchar	MAX	Description of the monitoring directive.
sLogFiles	navrchar	MAX	The log file text returned by the monitor.
sPhrase	nvarchar	MAX	The monitoring phrase to search for.
nIncludeLinesBeforeAfter	int	MAX	Setting to determine whether to include log entries prior to or after the log entry returned by the monitor.
oProcessID	varchar	30	The ID of an associated process.

tblMembership

This table contains the parent / child relationships of users, groups, partitions, and profiles.

COLUMN NAME	DATATYPE	LENGTH	DESCRIPTION
oParent	varchar	36	Primary Key. The ID of this object's parent.
nParentType	int		The type of object this object's parent is (e.g. partition, group etc.)

COLUMN NAME	DATATYPE	LENGTH	DESCRIPTION
oChild	varchar	36	Primary Key. The ID of this object's child
nChildType	int		The type of object this object's child is
fImplicitAdd	tinyint		Flag to implicitly add appropriate permissions.
oADID	varchar	36	The ID of the object's Active Directory Synchronization Profile in Process Director
fDisabled	tinyint		Determines if the object is disabled
fSync	tinyint		Determines if the object should be synced.
nAuthType	int		Authentication type.

tbML

This table contains information about Machine Learning definition objects. Note that most fields in this table have very similar names, with the only difference being that some of the field names end with the text "_pub". The ML definition must be published prior to use and the fields ending with "_pub" store the published version of the ML definition. The values in these fields are only changed when the ML definition is published/republished. This separation of current and published configurations enable you to make changes to the ML definition to test new scenarios, while, at the same time, keeping the published version unchanged and operational until you explicitly republish it.

COLUMN NAME	DATATYPE	LENGTH	DESCRIPTION
oMLID	varchar	36	Primary Key. The ID of the ML object

COLUMN NAME	DATATYPE	LENGTH	DESCRIPTION
sMLGroupName	nvarchar	256	Group name for drop-down menu organization
fActive	tinyint		Flag to set the object as active.
tLastError	datetime		Datetime of the last recorded ML error.
sFrequency	nvarchar	MAX	Execution frequency of the ML object.
fTimelineML	tinyint		Process Timeline associated with the ML object.
fTimelineML_pub	tinyint		fTimelineML as published.
nDatasetType	int		Dataset type of the ML object.
nDatasetType_pub	int		nDatasetType as published.
nMLAlgorithm	int		Pointer to the algorithm used
nMLAlgorithm_pub	int		nMLAlgorithm as published.
fIncludeUserForDuration	tinyint		Flag to include the specified user for the duration of the ML operation.
fIncludeUserForDuration_pub	tinyint		fIncludeUserForDuration as published.
sPredictedFeature	nvarchar	256	The predictive function.
sPredictedFeature_pub	nvarchar	256	sPredictedFeature as published.

COLUMN NAME	DATATYPE	LENGTH	DESCRIPTION
sInputFeatures	nvarchar	MAX	The input features.
sInputFeatures_pub	nvarchar	MAX	sInputFeatures as published.
oFORMID	varchar	36	The Form ID of the associated Form
oFORMID_pub	varchar	36	oFORMID as published.
sFormFieldList	nvarchar	MAX	List of Form fields to evaluate.
sFormFieldList_pub	nvarchar	MAX	sFormFieldList as published.
oKVID	varchar	36	Knowledge View ID of the associated Knowledge View,
oKVID_pub	varchar	36	oKVID as published.
oRunAsUID	varchar	36	User UID of the user context under which the ML object runs.
oRunAsUID_pub	varchar	36	oRunAsUID as published.
oDBID	varchar	36	Database ID of the associated Datasource object.
oDBID_pub	varchar	36	oDBID as published.
sSQL	nvarchar	MAX	The SQL command used to extract data.
sSQL_pub	nvarchar	MAX	sSQL as published.
sRESTURL	nvarchar	1024	The REST URL of the associated REST data.
sRESTURL_pub	nvarchar	1024	sRESTURL as published.
fRESTGET	tinyint		Flag to mark the data as REST data.

COLUMN NAME	DATATYPE	LENGTH	DESCRIPTION
fRESTGET_pub	tinyint		fRESTGET as published.
sRESTUserID	nvarchar	256	UserID used for the REST call.
sRESTUserID_pub	nvarchar	256	sRESTUserID as published.
sRESTPassword	nvarchar	256	Password used for the REST call.
sRESTPassword_pub	nvarchar	256	sRESTPassword as published.
nTrainSchedule	int		The schedule used to train the algorithm.
skVInput	nvarchar	1024	The Knowledge View data used as input.
skVInput_pub	nvarchar	1024	skVInput as published.
fRESTJSON	tinyint		Flag to mark REST data as JSON.
fRESTJSON_pub	tinyint		fRESTJSON as published.
oBVID	varchar	36	The Business Value ID of the associated Business Value.
oBVID_pub	varchar	36	oBVID as published.
nPredictedDataType	int		The type of data used for prediction.
nValidationMethod	int		The validation method used to evaluate data.
oDBID_RunAsUID	varchar	36	The User UID of the user context to used to access the Datasource.

tblMLInput

This table contains the records to store inputs for the Machine Learning system.

COLUMN NAME	DATATYPE	LENGTH	DESCRIPTION
oMLInputID	varchar	36	Primary Key. The ID of this object
oMLID	varchar	36	The ID of the parent ML object
fPublished	tinyint		Flag to indicate the object has been published.
sInputName	nvarchar	256	Name of the data input
nInputType	int		Type of input, e.g., database, REST, etc.
nInputDataType	int		data type of the input field.
nOrder	int		The order in which the input is evaluated.
s_sInputFilter	nvarchar	1024	Input filter
oFCID	varchar	36	Form control ID of the associated Form.
oKVCOLID	varchar	36	Knowledge View Column ID of the associated Knowledge View.
fSelected	tinyint		Flag to mark the field as selected.

tbMLTransform

This table contains the machine Learning transforms that are applied to ML data. Note that most fields in this table have very similar names, with the only difference being that some of the field names end with the text "_pub". The ML definition must be published prior to use and the fields ending with "_pub" store the published version of the ML definition. The values in these fields are only changed

when the ML definition is published/republished. This separation of current and published configurations enable you to make changes to the ML definition to test new scenarios, while, at the same time, keeping the published version unchanged and operational until you explicitly republish it.

COLUMN NAME	DATATYPE	LENGTH	DESCRIPTION
oMLTID	varchar	36	Primary Key. The ID of this object
oMLID	varchar	36	The ID of the parent ML object
sTransformDesc	nvarchar	1024	Description of the Transform to implement.
sTransformDesc_pub	nvarchar	1024	sTransformDesc as published.
nOrder	int		The order in which this field is evaluated.
nOrder_pub	int		nOrder as published.
sDatatableSQLCond	nvarchar	MAX	SQL condition applied to this transform.
sDatatableSQLCond_pub	nvarchar	MAX	sDatatableSQLCond as published.
nAction	int		Action to take.
nAction_pub	int		nAction as published.
nActionOper	int		Operation to apply to the Action.
nActionOper_pub	int		nActionOper as published.
sDatasetColName	nvarchar	64	Column name of the associated data column.
sDatasetColName_pub	nvarchar	64	sDatasetColName as

COLUMN NAME	DATATYPE	LENGTH	DESCRIPTION
			published.
sDatasetColValue	nvarchar	64	Value of the associated data column.
sDatasetColValue_pub	nvarchar	64	sDatasetColValue as published.
fPublished	tinyint		Flag to mark the item as published.

tblNameValue

This table stores information about Name/Value pairs.

COLUMN NAME	DATATYPE	LENGTH	DESCRIPTION
oNVID	varchar	36	Primary Key. The ID of this object
oOID	vachar	36	The object ID of the associated Process Director object.
nObjectType	int		The type of object associated with the pair.
sType	nvarchar	256	The type of name/-value pair.
sName	nvarchar	256	The Name portion of the pair.
sValue	nvarchar	MAX	The Value portion of the pair.

tblObject

This table contains the binary information for an object.

i Microsoft is deprecating the "image" column type in SQL Server. As a result, we've changed the image storage columns type on bObjectData to the varbinary(max) column type for users of v4.07 and higher. This means that any FULLTEXT - FTS (full text search) indexes on tblObject will be eliminated. These indexes will have to be recreated, if you are using them.

COLUMN NAME	DATATYPE	LENGTH	DESCRIPTION
oOID	varchar	36	Primary Key. This object's ID
oDID	varchar	36	This object's document ID
oPID	varchar	36	Object's Partition ID
nVersion	int		This object's current version number
sFileType	nvarchar	64	This object's file type (Form definition, .docx etc.)
fManaged	tinyint		Flag to set as a managed object.
fWebViewable	tinyint		Flag to set whether this object is viewable in the browser.
fWrapper	tinyint		Flag to set as a wrapper object.
fTopmost	tinyint		Flag to set as a top-most object.
fFileBacked	tinyint		Flag to set as a file-backed object.
tCreate	datetime		Time this object was created

COLUMN NAME	DATATYPE	LENGTH	DESCRIPTION
bObjectData	varbinary	MAX	The actual information defining the object.
nObjectLen	int		Size of the object in KB.
nObjectLen2	bigint		Size of the object in KB for large objects.

tblObjVersion

This table contains the information for an object's version information.

COLUMN NAME	DATATYPE	LENGTH	DESCRIPTION
oVID	varchar	36	Primary Key. This object's version ID.
oPID	varchar	36	Object's Partition ID.
sLabel	nvarchar	256	The Version label.
sDesc	nvarchar	1024	The version description.
oID	varchar	36	Object ID of the associated object.
nType	int		Type of object.
sName	nvarchar	1024	The version name.
nVersion	int		This object's current version number.
sXML	nvarchar	MAX	The XML file associated with the object.
oCreateUser	varchar	36	The user that created the version.
tCreate	datetime		Time this version was created.

tblParm

This table contains information about a parameter.

COLUMN NAME	DATATYPE	LENGTH	DESCRIPTION
oPARMID	varchar	36	Primary Key. Parameter ID.
sParmName	nvarchar	256	Parameter's Name.
oParentID	varchar	36	The ID of the Parameter's parent object.
nParentType	int		The type of parent object.

tblPartition

This table contains information about a partition.

COLUMN NAME	DATATYPE	LENGTH	DESCRIPTION
oPID	varchar	36	Primary Key. Partition ID.
sName	nvarchar	256	Partition's Name.
sDesc	nvarchar	1024	Partition's Description.
fAutoAddUsers	tinyint		Flag to determine if new users are added to the partition automatically.
fAutoAddGroups	tinyint		Flag to determine if new groups are added to the partition automatically.

tblPaymentGateway

This table contains a record of settings for a payment gateway.

COLUMN NAME	DATATYPE	LENGTH	DESCRIPTION
oPGID	varchar	36	Primary Key. Payment Gateway ID.
sToken	nvarchar	256	The token for the payment gateway.
oFORMINSTID	varchar	36	The Form Instance ID of the associated Form instance.
oCTFORMINSTID	varchar	36	The Custom Task Form Instance ID of the associated Custom Task.
tAdd	datetime		When the gateway was added.
sURL	nvarchar	1024	The URL of the payment gateway.
sIPAddress	nvarchar	32	The IP address of the requestor.
oUID	varchar	36	the User UID of the requesting user.
fOverwritten	tinyint		Flag to set if the gateway information has been overwritten.
nStatus	int		Status of the request.

tblPerm

This table contains a record of permissions for all objects in the content list.

COLUMN NAME	DATATYPE	LENGTH	DESCRIPTION
oPERMID	varchar	36	Primary Key. ID of this permission record.

COLUMN NAME	DATATYPE	LENGTH	DESCRIPTION
oID	varchar	36	Object ID.
oPID	varchar	36	Partition ID.
oGrantID	varchar	36	The ID of the permissions grant.
nGrantType	int		The type of permissions grant. This value can be: 9 = User 10 = Group
fRead	tinyint		Determines if this object can be read.
fWrite	tinyint		Determines if this object can be written.
fDelete	tinyint		Determines if this object can be deleted.
fExecute	tinyint		Determines if this object can be run.
fRead2	tinyint		Secondary fRead.
fWrite2	tinyint		Secondary fWrite.
fDelete2	tinyint		Secondary fDelete.

tblPortlet

This table contains information for a portlet definition.

COLUMN NAME	DATATYPE	LENGTH	DESCRIPTION
oPORTID	varchar	36	Primary Key. ID of this portlet
oPROFILEID	varchar	36	Profile ID.
nHomeType	int		Home page type.

COLUMN NAME	DATATYPE	LENGTH	DESCRIPTION
nOrder	int		Display Order of the Portlet.
nIcon	int		Defines which icon is displayed to represent this portlet.
sText	nvarchar	128	Display text.
nType	int		Portlet type, using the common nType enumerator.
oPID	varchar	36	Portlet's partition ID.
oKVID	varchar	36	ID of the KView that this portlet displays.
sURL	nvarchar	1024	URL of the Portlet frame.
nHowToOpen	int		Determines how the Portlet will be opened for the user.
sToolTip	nvarchar	1024	Tooltip for the portlet.
oFORMID	varchar	36	Associated Form ID.
oPROCID	varchar	36	Associated Process ID.
oRID	varchar	36	Associated Report ID.
oCHARTID	varchar	36	Associated Chart ID.
oDASHID	varchar	36	Associated Dashboard ID.
sPortletName	nvarchar	256	Portlet name.
nRefresh	int		Refresh interval, in seconds.

COLUMN NAME	DATATYPE	LENGTH	DESCRIPTION
sCSSClass	nvarchar	256	CSS class names applied to the Portlet.
sIconColor	nvarchar	64	Icon color for the Portlet.
sHTMLContent	nvarchar	MAX	Raw HTML content for the Portlet.
fNoTitle	tinyint		Flag to show/hide the Portlet Title.

tblProfile

This table contains information defining a Workspace.

COLUMN NAME	DATATYPE	LENGTH	DESCRIPTION
oPROFILEID	varchar	36	Primary Key. ID of the Workspace.
sName	nvarchar	256	Name of the Workspace.
sDesc	nvarchar	1024	Workspace description.
sLogoURL	nvarchar	512	URL of the Workspace's logo image.
sLogoLink	nvarchar	512	URL of the link which opens if the Logo is clicked.
nLayout	int		Layout type for the Workspace.
fAutoAddUsers	tinyint		Flag to determine if new users are automatically added to the Workspace.
nOrder	int	36	Order in which but-

COLUMN NAME	DATATYPE	LENGTH	DESCRIPTION
			tons are displayed in the Workspace.
nIcon	int		Icon to use for button in the Workspace.
nHowToDisplay	int		How to display a button in the Workspace (as icon, text, or both).
sToolTip	nvarchar	1024	Tooltip to display for the Workspace.
fCaseOnly	tinyint		Flag that specifies whether the Workspace is only used with a case definition.
sIconColor	nvarchar	64	Color of the Workspace icon.
sBgName	nvarchar	256	Name of the Workspace background image.
nBgSize	int		Size of the Workspace background image.
fDesktopMode	tinyint		Flag to display the Workspace using the Desktop interface.
nBgOpacity	int		Integer percentage of background image opacity.
sDesktopSave	nvarchar	MAX	Save data for customized Workspaces using the Desktop

COLUMN NAME	DATATYPE	LENGTH	DESCRIPTION
			Interface.

tblProjActivity

This table contains information for a Process Timeline Activity.

COLUMN NAME	DATATYPE	LENGTH	DESCRIPTION
oACTID	varchar	36	Primary Key. ID of the activity.
oPRID	varchar	36	ID of the activity's parent process.
oParentACTID	varchar	36	ID of this activity's parent activity.
nActivityType	int		This activity's type (Custom Task, notification, etc.).
nNumber	int		This activity's number.
sString	nvarchar	32	The Activity's string value
sActName	nvarchar	128	Name of the activity.
sDesc	nvarchar	1024	Activity's description.
oStartWFID	varchar	36	ID of the Workflow this activity starts.
oFORMID	varchar	36	ID of the form this activity opens.
oScriptDID	varchar	36	ID of the script associated with this activity.
sScriptFunction	nvarchar	256	Name of the script function.
fExpanded	tinyint		Expanded flag.
fRecurring	tinyint		Recurring activity flag.

COLUMN NAME	DATATYPE	LENGTH	DESCRIPTION
fEmail	tinyint		Allows this activity to send emails.
oEmailFORMID	varchar	36	ID of the email template used by this activity.
fRequiredForParent	tinyint		Activity require to complete parent flag.
fSaving	tinyint		Temporary flag used when importing a new timeline.
sInstructions	nvarchar	1024	This activity's instructions.
oStartCONDSETID	varchar	36	Condition Set ID for starting the activity.
oEnabledCONDSETID	varchar	36	Condition Set ID for enabling the activity, i.e., the "needed when" condition.
nCompleteWhen	int		When to mark the activity complete.
oCompleteCONDSETID	varchar	36	Condition Set ID for completing the activity.
sColor	nvarchar	64	Color of the activity's Gantt Chart bar.
nConfigDuration	int		Configured duration.
nConfigStart	int		Configured activity start from process start, in configured increments, e.g., days, weeks, etc.
fAutoConfigDuration	tinyint		Automatically configure

COLUMN NAME	DATATYPE	LENGTH	DESCRIPTION
			the start, irrespective of nConfigStart.
nWeight	int		Activity priority.
nWhatSetsDueDate	int		Determines what sets the due date (Business Rule, set manually, etc.).
nDueDateAction	int		Determines what action this activity should take when it reaches the due date (email, nothing, skip, etc.).
oDueDateAssignedRULEID	varchar	36	Business rule ID that sets the due date.
oDueDateFCID	varchar	36	ID of the form control that sets the due date.
sResult	nvarchar	64	Activity Result.
nRestartPrevUsers	int		Restart previous users setting.
fActivityLateError	tinyint		Flag for an Activity Late error.
fActivityStartError	tinyint		Flag for an Activity Start error.
oExternalGUID	varchar	36	This activity's external GUID.
nConfigDurationType	int		Increments to use for duration.
oStartPRID	varchar	36	ID of the process this activity starts
fCopyObjectsUp	tinyint		Copy Objects to Parent

COLUMN NAME	DATATYPE	LENGTH	DESCRIPTION
			flag.
fCopyObjectsDown	tinyint		Copy objects to child flag.
sCopyUpGroup	nvarchar	256	The group name of documents copied up to parent processes.
sCopyDownGroup	nvarchar	256	The group name of documents copied down to child processes.
sObjGroupName	nvarchar	256	Group name.
nAddObj	int		Objects to add to the activity.
fMakeCurrForm	tinyint		Create a form instance for the current activity flag.
oCTFORMINSTID	varchar	36	Associated Form Instance ID.
fWaitForSubProcess	tinyint		Flag: Should this activity wait for the sub-processes to finish before moving on?
fReAuthenticate	tinyint		Flag: Should this activity require the user to re-authenticate?
fCommentPopup	tinyint		Flag: Should comments be displayed in a popup?
nActsRun1	int		Number of times this activity has run.
nActAvgSecs1	int		Number of seconds this

COLUMN NAME	DATATYPE	LENGTH	DESCRIPTION
			activity usually takes to complete.
nActAvgSecsBusiness1	int		Number of Business seconds this activity usually takes to complete.
nActsRun2	int		Secondary nActsRun1.
nActAvgSecs2	int		Secondary nActAvgSecs1.
nActAvgSecsBusiness2	int		Secondary nActAvgSecsBusiness1.
nActsRun3	int		Tertiary nActsRun1.
nActAvgSecs3	int		Tertiary nActAvgSecs1.
nActAvgSecsBusiness3	int		Tertiary nActAvgSecsBusiness1.
fAllowEmailComplete	tinyint		Flag to allow email completion.
sResultList	nvarchar	256	List of child activity results.
oBranchACTID	varchar	36	Branch Activity ID of associated Branch activity.
sDueDateSysVar	nvarchar	256	Task due date string.
nAutoShowTask	int		Automatically show task if previous task is assigned to the same user.
nBranchType	int		Branch type.
sEventName	nvarchar	256	Event name.

COLUMN NAME	DATATYPE	LENGTH	DESCRIPTION
nRecurringDuration	int		Frequency of recurrence in configured increments (days, weeks, etc.).
nRecurringDurationType	int		Type of recurrence.
fInSequence	tinyint		Run in sequence flag.
oRestartPrevUsersCond	varchar	36	Condition Set Id for conditions to restart users.
nRestartPrevUsersElse	int		When to restart users.
fAllowInviteByEmail	tinyint		Flag to enable email invites to task.
nAssignUsersFlag	int		User assignment flag.
fUserMustAccept	tinyint		Flag to require users to explicitly accept the task.
fWaitForDueDate	tinyint		Flag to require the activity to wait until the due date.
fWaitForResultCond	tinyint		Flag to require the activity to wait until the result conditions are met.
fWaitForStartCond	tinyint		Flag to require the activity to wait until the start conditions are met..
fRequiresUser	tinyint		Flag to require user to manually complete the task.
fSetResultUnion	tinyint		Flag to set consensus result for multiple participants in the activity.

COLUMN NAME	DATATYPE	LENGTH	DESCRIPTION
oGoalCONDSETID	varchar	36	Condition Set ID for associated Goal.
nGoalAction	int		Action the Goal should take.
oRestartWhenCONDSETID	varchar	36	Condition Set ID for restart conditions.
oBreakWhenCONDSETID	varchar	36	Condition Set ID for break conditions.
oContinueUntilCONDSETID	varchar	36	Condition Set ID for completion conditions.
fRestartWhen	tinyint		Flag to set restart on conditions.
fBreakWhen	tinyint		Flag to set break on conditions.
fContinueUntil	tinyint		Flag to set completion on conditions.
fRunAsync	tinyint		Flag to run the activity asynchronously.
fAllowAnonymousTasks	tinyint		Flag to allow anonymous users to be assigned tasks.
nCaseActions	int		Different case actions to take for this case task.
oCASEID	varchar	36	Case ID for Case Definition to Create.
oCaseCONDSETID	varchar	36	Condition Set ID for conditions to find existing case.
fSwitchToCaseMode	tinyint		Flag to place the pro-

COLUMN NAME	DATATYPE	LENGTH	DESCRIPTION
			cess and all contents in case context.
fIncrFormVers	tinyint		Flag to increment the Form version.
fNew	tinyint		Flag to indicate the activity is newly started.
sBreakWhenReason	nvarchar	512	Reason the break the activity.
oMLID	varchar	36	ML Definition ID for associated ML object.
sOnlyGroupsToCase	nvarchar	256	Group names to apply to Case.
fAddToCase	tinyint		Flag to add the activity to a Case.
fAllowSharedDelegation	tinyint		Flag to enable Shared Delegation for the activity.
sRestartReason	nvarchar	512	Test reason for restarting the activity.
fDeleted	tinyint		Flag to mark the activity as deleted.
sTaskSharingOwnerSysvar	nvarchar	256	Name of the delegator for Shared Delegation.

tblProjActivityDepend

This table contains information for a Timeline Activity's dependency.

COLUMN NAME	DATATYPE	LENGTH	DESCRIPTION
oACTDID	varchar	36	Primary Key. ID of this dependence.
oACTID	varchar	36	Activity ID of the

COLUMN NAME	DATATYPE	LENGTH	DESCRIPTION
oPRID	varchar	36	Process ID of the process containing this activity.
oDependsOnACTID	varchar	36	Activity ID of the parent activity.
fSaving	tinyint	1	Temporary flag used when importing a new Process Timeline.

tblProjActivityInst

This table contains information for an instance of a Timeline Activity.

COLUMN NAME	DATATYPE	LENGTH	DESCRIPTION
oACTINSTID	varchar	36	Primary Key. ID of this activity instance.
oACTID	varchar	36	Activity ID of the activity definition.
oPRINSTID	varchar	36	Project Instance ID of the parent timeline instance for this activity.
nActivityType	int		Type of activity (Custom Task, user Step, etc.).
nStatus	int		Activity's status (running, complete, etc.).
nTermReason	int		Termination reason (completed, etc.).
tStart	datetime		Time the activity star-

COLUMN NAME	DATATYPE	LENGTH	DESCRIPTION
tEnd	datetime		Time the activity ended.
tDue	datetime		Time the activity is due.
nDuration	int		Amount of time the activity has taken, in configured increments (days, weeks, etc.).
sActName	nvarchar	128	Name of the activity.
fDueDateProcessed	tinyint		Flag to indicate the Due Date has been processed.
sResult	nvarchar	64	Activity result.
sMessage	nvarchar	1024	Message associated with activity.
fError	tinyint		Flag to indicate activity in error.
fRolledBack	tinyint		Flag to indicate the activity has been rolled back.
oAdminUID	varchar	36	Admin User UID who took administrative action.
sAdminComment	nvarchar	512	System comments, displayed in the Routing Slip.
nParticipants	int		Number of participants for this activ-

COLUMN NAME	DATATYPE	LENGTH	DESCRIPTION
			ity.
nCompleteParticipants	int		Number of participants that completed this activity.
nTimesRun	int		Number of times this activity has been run.
oSubWFID	varchar	36	Workflow ID of the Workflow this activity starts.
oSubPRID	varchar	36	Project ID of the Process Timeline this activity starts
tConfiguredStart	datetime		Configured start date.
tCalculatedStart	datetime		Calculated start date.
tPredictedStart	datetime		Predicted start date.
tConfiguredEnd	datetime		Configured end date.
tCalculatedEnd	datetime		Calculated end date.
tPredictedEnd	datetime		Predicted end date.
oPRID	varchar	36	Project ID of this activity's Parent Process Timeline definition.
fDueDateReset	tinyint		Flag to reset due date.
fEventPosted	tinyint		Flag that the event has been posted.
sEventName	nvarchar	256	Name of the event.
sRTIDsTaken	nvarchar	256	List of Result ID's taken.

COLUMN NAME	DATATYPE	LENGTH	DESCRIPTION
sResultNamesTaken	nvarchar	256	List of result names taken.
sTaskSharingOwnerUIDs	nvarchar	MAX	User UID of the owner of a Shared Delegation task.

tblProjActivityNotify

This table contains notification information for an activity.

COLUMN NAME	DATATYPE	LENGTH	DESCRIPTION
oACTNID	varchar	36	Primary Key. ID of the notification.
oACTID	varchar	36	Activity ID of the activity that uses this notification info.
oPRID	varchar	36	Project ID of the Process Timeline definition for this activity.
nWhenToNotify	int		Sets when to make the notification
nReminderSecs	int		Seconds between reminder notifications.
nUserSysVarType	int		User Type.
sUserSysVarString	nvarchar	1024	User names list.
sNotifyDesc	nvarchar	1024	Notification description.

tblProjActivityNotifyInst

This table contains information for an instance of a Timeline Activity notification.

COLUMN NAME	DATATYPE	LENGTH	DESCRIPTION
oACTNINSTID	varchar	36	Primary Key. ID of this notification instance
oACTID	varchar	36	Activity ID of the parent activity.
oACTINSTID	varchar	36	Activity Instance ID of the parent activity instance.
oPRINSTID	varchar	36	Project Instance ID of the parent Process Timeline instance.
tLastNotify	datetime		Date of last notification.
nReminderSecs	int		Number of seconds between reminder notifications.
nUserSysVarType	int		User type
sUserSysVarString	nvarchar	1024	User names.
nWhenToNotify	int		Setting for when users are notified.
sNotifyDesc	nvarchar	1024	Notification description.

tblProjActivityUser

This table contains information for a Timeline Activity user Step.

COLUMN NAME	DATATYPE	LENGTH	DESCRIPTION
oACTUID	varchar	36	Primary Key. Activity User ID.
oACTID	varchar	36	Activity ID of the parent activity.

COLUMN NAME	DATATYPE	LENGTH	DESCRIPTION
oPRID	varchar	36	Project ID of the parent Process Timeline.
nUserSysVarType	int		User type.
sUserSysVarString	nvarchar	1024	User name(s).
oSubTaskNameArrayFCID	varchar	36	Form Control ID of array control.
nOrder	int		Order of activity user.

tblProjActivityUserInst

This table contains information for an instance of a user Step Timeline Activity.

COLUMN NAME	DATATYPE	LENGTH	DESCRIPTION
oACTUINSTID	varchar	36	Primary Key. ID of this instance
oACTUID	varchar	36	Activity User ID of the activity user.
oACTINSTID	varchar	36	Activity Instance ID of the parent activity instance.
oACTID	varchar	36	Activity ID of the parent activity definition.
oPRINSTID	varchar	36	Project Instance ID of the parent Timeline instance.
oUID	varchar	36	User UID of the activity user.
sUserName	nvarchar	256	Name of the activity user.
sActName	nvarchar	128	Name of the activity.
nStatus	int		Status of the activity.

COLUMN NAME	DATATYPE	LENGTH	DESCRIPTION
nTermReason	int		Termination reason for the activity.
sComment	nvarchar	MAX	Activity comments, e.g., signature comments.
sResult	nvarchar	64	Activity result.
tStart	datetime		Time the activity started.
tEnd	datetime		Time the activity ended.
oOnBehalfOfUID	varchar	36	User UID of the user for whom this activity completed "on behalf of".
oAdminUID	varchar	36	User UID of administrator.
sAdminComment	nvarchar	512	Administrator comments.
oReassignedToUID	varchar	36	User UID of the user to whom this activity was reassigned.
nHowCompleted	int		Method used to complete the activity.
oPRID	varchar	36	Project ID of the parent Process Timeline.
sSubTaskName	nvarchar	128	Subtask name configured for the activity.
nOrder	int		Order of this instance.

COLUMN NAME	DATATYPE	LENGTH	DESCRIPTION
oInvitedByUID	varchar	36	User UID of the parent user who invited additional participants.
fDidReauth	tinyint		Reflects whether the user had to reauthenticate to complete this activity.
oCompletedByUID	varchar	36	oUID of the user who completed this task.
oImpersonatedByUID	varchar	36	UID of the user impersonating the user who completed this activity.
oRTID	varchar	36	The matching result ID for this activity instance.
sResultName	nvarchar	256	The matching result name for this activity instance.
sEmailAddress	nvarchar	256	User's email address.
fSharedDelegation	tinyint		Flag to determine if the activity uses Shared delegation.

tblProject

This table contains information for a Process Timeline definition.

COLUMN NAME	DATATYPE	LENGTH	DESCRIPTION
oPRID	varchar	36	Primary Key. ID of the timeline definition.

COLUMN NAME	DATATYPE	LENGTH	DESCRIPTION
sInstName	nvarchar	256	Format determining how instances of this timeline will be named.
oFORMID	varchar	36	Form ID of Form associated with this timeline.
oEmailFORMID	varchar	36	Form ID of default email template used by this timeline.
fHorizontalReport	tinyint		Flag to show horizontal report.
nPriority	int		Priority of the timeline.
sGroupName	nvarchar	256	Timeline's group name.
nTimeline	int		Timeline number.
nDurationType	int		Unit of time the duration is measured in (days, years, etc.).
oScriptDID	varchar	36	Script ID of the script associated with this timeline.
nProjsRun1	int		Number of times this timeline has been run.
nProjAvgSecs1	int		Average time taken to complete timeline, in seconds.
nProjAvgSecsBusiness1	int		Average number of Business Seconds the timeline has taken to run.
nProjsRun2	int		Secondary nProjsRun1.
nProjAvgSecs2	int		Secondary nPro-

COLUMN NAME	DATATYPE	LENGTH	DESCRIPTION
nProjAvgSecsBusiness2	int		Secondary nProjAvgSecsBusiness1.
nProjsRun3	int		Tertiary nProjsRun1.
nProjAvgSecs3	int		Tertiary nProjAvgSecs1.
nProjAvgSecsBusiness3	int		Tertiary nProjAvgSecsBusiness1.
fDeleteTimeline	tinyint		Flag to determine if the timeline should delete itself after running.
sCopyDownGroup	nvarchar	256	The group name of documents copied down to child processes.
sCopyUpGroup	nvarchar	256	The group name of documents copied up to parent processes.
fSubWfCopyDown	tinyint		Flag to copy objects to child.
fSubWfCopyUp	tinyint		Flag to copy objects to parent.
nAutoShowTask	int		Determine when to show next task to user.

tblProjectInstance

This table contains information for a Process Timeline instance.

COLUMN NAME	DATATYPE	LENGTH	DESCRIPTION
oPRINSTID	varchar	36	Primary Key. ID of the timeline instance
oPRID	varchar	36	Project ID of the parent Process Timeline

COLUMN NAME	DATATYPE	LENGTH	DESCRIPTION
			definition.
nStatus	int		Status of this timeline instance.
nTermReason	int		Reason the timeline has been terminated. Please see the Classes topic for a list of termination reasons and their associated integer code.
tStart	datetime		Time the instance was started.
tEnd	datetime		Time this instance was ended.
oCurrFORMINSTID	varchar	36	Form Instance ID of the form instance being used by the Process Timeline instance.
oAdminUID	varchar	36	User UID of an user who took an administrative action.
sAdminComment	nvarchar	512	Administrator's comment.
nPriority	int		Priority of this timeline instance.
oParentPRINSTID	varchar	36	Project Instance ID of the parent Process Timeline instance.
oParentACTINSTID	varchar	36	Activity Instance ID of the parent activity

COLUMN NAME	DATATYPE	LENGTH	DESCRIPTION
			instance.
oParentWFINSTID	varchar	36	Workflow Instance ID of the Parent Workflow instance.
oParentSTINSTID	varchar	36	Workflow Step Instance ID of the parent Workflow Step instance.
tConfiguredEnd	datetime		Configured end date.
tCalculatedEnd	datetime		Calculated end date.
tPredictedEnd	datetime		Predicted end date.
tLastPredictionCalc	datetime		Date of last prediction calculation.
sInitiatorComment	nvarchar	MAX	Contains an optional comment from the timeline initiator.
fError	tinyint		Flag to indicate the instance is in error.
sMessage	nvarchar	1024	Message from the system, usually the error message.

tblProjectResult

This table contains information for a Timeline Activity's results.

COLUMN NAME	DATATYPE	LENGTH	DESCRIPTION
oRTID	varchar	36	Primary Key. ID of the result.
oPRID	varchar	36	Project Instance ID of the parent Project Instance.

COLUMN NAME	DATATYPE	LENGTH	DESCRIPTION
oACTID	varchar	36	The Activity ID of the parent activity.
sResultName	nvarchar	128	The Result string.
sOfflineResultList	nvarchar	256	String list of items that can satisfy the result for offline (email) approval.
sDesc	nvarchar	1024	Result description.
nCondUserPercent	int		The percent of users that must choose this result for it to be valid.
nCondUserNum	int		The number of users that must choose this result for it to be valid.
nButtonOrder	int		The order in which the result button will appear in the UI.
nIcon	int		The icon that will display on the result button.
fDefaultResult	tinyint		Flag that determines whether the result is the default result.
fCommentReq	tinyint		Flag that determines if a completion comment is required
fSaving	tinyint		Flag that is set when saving.

COLUMN NAME	DATATYPE	LENGTH	DESCRIPTION
oCONDSETID	varchar	36	The ID of the condition set that is associated with the result
sConfirmText	nvarchar	256	Text of the confirmation prompt.
oDisplayCONDSETID	varchar	36	The Condition Set ID of the condition set that determines whether the result is visible.
fAllowCompleteTaskList	tinyint		Flag to allow completion from the task list.
fSkipValidation	tinyint		Flag to skip validation when this result is selected.
sIconColor	nvarchar	64	The icon color.
sButtonBackColor	nvarchar	64	The Button background color.
sButtonText	nvarchar	64	The Button text color.

tblReport

This table contains the information for a Report definition.

i Microsoft is deprecating the "image" column type in SQL Server. As a result, we've changed the image storage columns type on bObjectData to the varbinary(max) column type for users of v4.07 and higher. This means that any FULLTEXT - FTS (full text search) indexes on tblReport will be eliminated. These indexes will have to be recreated, if you are using them.

COLUMN NAME	DATATYPE	LENGTH	DESCRIPTION
oRID	varchar	36	Primary Key. This report's ID
bObjectData	varbinary	MAX	Binary information for the report object.
nObjectLen	Int		Length of bObjectData in bytes.
fPromptFirst	tinyint		Flag to prompt the user.
fFlashViewer	tinyint		Flag to use the Flash Viewer (Deprecated, Flash has reached end of life. Remains for legacy purposes only.)
fShowToolbar	tinyint		Flag to show the toolbar.
fShowExport	tinyint		Flag to show the export icon.
fShowNav	tinyint		Flag to show navigation.
fShowPrint	tinyint		Flag to show print button.
fShowViewMode	tinyint		Flag to show the View Mode icon.
fShowZoom	tinyint		Flag to show the Zoom icon.
sListViews	nvarchar	1024	List of SQL View names.
sLinkKVID	varchar	1024	List of Knowledge View ID's linked to

COLUMN NAME	DATATYPE	LENGTH	DESCRIPTION
			this report.
nReportType	int		Identifies the report type.
nReportZoomMode	int		Identifies the report's Zoom Mode.
nReportPageMode	int		Identifies the report's page mode.

tblReportDS

This table stores information about Datasources used by Reports.

COLUMN NAME	DATATYPE	LENGTH	DESCRIPTION
oRID	varchar	36	The Report ID of the parent Report.
oDBID	varchar	36	The Datasource ID of the associated Data-source object.
sTableName	nvarchar	256	Name of the data table.
sSQL	nvarchar	1024	Deprecated in favor of the longer sSQL2 field.
sSQL2	nvarchar	MAX	Replaces sSQL. The SQL Statement used to generate the report.
oRPTDSID	varchar	36	Primary Key. The ID of this object.

tblReportVar

This table contains information for variables used by Reports

COLUMN NAME	DATATYPE	LENGTH	DESCRIPTION
oRID	varchar	36	The Report ID of the parent report.
sName	nvarchar	256	Name of the variable.
sDesc	nvarchar	1024	Description of the variable.
nOrder	int		Order in which this variable will be promoted.
nSysVarType	int		Type of system variable
sDefault	nvarchar	1024	Default value.
fPrompt	tinyint		Flag to determine whether the user should be prompted to set the variable.
sFormat	nvarchar	32	Optional formatting information for the variable.
oDDID	varchar	36	Dropdown Object ID of the associated Dropdown Object.
oRPTVARID	varchar	36	Primary Key. The ID of this object.

tblRestToken

This table contains information about REST tokens used by the system.

COLUMN NAME	DATATYPE	LENGTH	DESCRIPTION
oToken	varchar	36	Primary Key. The ID of the token.
tExpiration	datetime		Expiration datetime for the token.

tblRule

This table contains information for Business Rule definitions.

COLUMN NAME	DATATYPE	LENGTH	DESCRIPTION
oRULEID	varchar	36	Primary Key. ID of the Rule definition.
nRuleType	int		Type of Business Rule (Custom Task, etc.)
sLinkWFID	varchar	256	The Workflow ID of an associated Workflow.
SLinkFORMID	varchar	256	The Form ID of an associated Form.
oCONDSETID	varchar	36	The Condition Set ID of an associated condition set.
nValueType	int		Type of data the rule returns.
nAggType	int		Type of data aggregation used.
nActionType	int		Type of action to take.
sRuleGroupName	nvarchar	256	Name of the group this rule belongs to.
nValueSysVarType	int		Type of data returned.
sValueSysVarString	nvarchar	256	String value of the return.
nValueSysVarNumber	decimal	18,4	Numeric value of the return.
tValueSysVarDateTime	datetime		Datetime value of the return.

COLUMN NAME	DATATYPE	LENGTH	DESCRIPTION
sLinkPRID	varchar	36	The Project Instance ID of an associated Process Timeline.
sValueSysVarStringEx	varchar	MAX	String value of the return for strings longer than 256 characters.

tblRuleValue

This table contains information for a specific return value of a Business Rule.

COLUMN NAME	DATATYPE	LENGTH	DESCRIPTION
oRULEVALUEID	varchar	36	Primary Key. ID of this rule value
oRULEID	varchar	36	Rule ID of the parent Rule definition.
oCONDSETID	varchar	36	Condition Set ID of an associated condition set.
nValueSysVarType	int		Type of data returned.
sValueSysVarString	nvarchar	1024	String value of the return.
nValueSysVarNumber	decimal	18,4	Numeric value of the return.
tValueSysVarDateTime	datetime		Datetime value of the return.
nOrder	int		Order of return.
sValueSysVarStringEx	nvarchar	MAX	String value of the return for strings longer than 1024 characters.

tblSchemaCat

This table contains Meta Data category definitions and their parent/child relationships.

COLUMN NAME	DATATYPE	LENGTH	DESCRIPTION
oCATID	varchar	36	Primary Key. This category's ID
oPID	varchar	36	Partition ID of the parent Partition.
oParentCATID	varchar	36	The Category ID of the parent category.
sName	nvarchar	256	This category's name.
sDesc	nvarchar	1024	This category's description.
nIcon	int		Identifies the icon to display.
sIconColor	nvarchar	64	Icon color.

tblSchemaCatAttrib


This table contains Meta Data Attribute definitions and the parent Category for each attribute.

COLUMN NAME	DATATYPE	LENGTH	DESCRIPTION
oCATID	varchar	36	The Category ID of the parent Category.
oPID	varchar	36	The Partition ID of the parent Partition.
oATTID	varchar	36	Primary Key. This attribute's ID.
sName	nvarchar	256	This attribute's name.
sDesc	nvarchar	1024	This attribute's description.

COLUMN NAME	DATATYPE	LENGTH	DESCRIPTION
sExtName	nvarchar	128	The External name for the Attribute.
nDataType	int		The Attribute's data type.
sCulture	varchar	64	The Culture String for the attribute.

tblSettings

This table contains the system settings for Process Director.

 This table contains the overall system settings for your installation. Altering the data in this table isn't recommended without direct assistance from BP Logix. Alterations to this data may make your installation non-functional, and require a complete restore of the Process Director database from backup.

COLUMN NAME	DATATYPE	LENGTH	DESCRIPTION
nDBVersion	int		Current Process Director DB version.
nDBVersionPrev	int		Previous Process Director DB version.
oInstall	varchar	36	Installation ID.
tCreate	datetime		Datetime the instance was created.
oDefaultKVID	varchar	36	Knowledge View ID of the default Knowledge View.
tLastTimer	datetime		Datetime timers

COLUMN NAME	DATATYPE	LENGTH	DESCRIPTION
			last ran.
tLastTimerDeletePendFormInst	datetime		Datetime the timers last ran to delete pending Form instances.
tLastTimerDeleteOrphans	datetime		Datetime the timers last ran to delete orphaned objects.
tLastTimerWfCheckAdvance	datetime		Datetime the timers last ran to check advance for Workflows.
tLastTimerWfCheckReminders	datetime		Datetime the timers last ran to check Workflow reminders.
tLastTimerProjCheckAdvance	datetime		Datetime the timers last ran to check advance for Process Timelines.
tLastTimerProjCheckReminders	datetime		Datetime the timers last ran to check Process Timeline reminders.
tLastTimerDeletePaymentGateway	datetime		Datetime the timers last ran to delete Payment Gateway instances.

COLUMN NAME	DATATYPE	LENGTH	DESCRIPTION
tLastTimerBuildFormDataCache	datetime		Datetime the timers last ran to build Form data caches.
sFavIcons	nvarchar	MAX	Favorite icons in use.
tLastTimerProjCheckPredict	datetime		Datetime the timers last ran to check prediction times for processes.
sAnonDays	nvarchar	256	Number of anonymous Day Pass users.
sAuthDays	nvarchar	256	Number of Authenticated Day Pass users.
sAnonSubmissions	nvarchar	256	Number of anonymous Form submissions.

tblSqlView

This table contains the information about Form SQL Views created on the system.

COLUMN NAME	DATATYPE	LENGTH	DESCRIPTION
oSVID	varchar	36	Primary Key. SQL View ID.
oFormID	varchar	36	The ID of an associated Form definition.
sViewName	nvarchar	MAX	The name of the SQL View.

COLUMN NAME	DATATYPE	LENGTH	DESCRIPTION
sDescription	nvarchar	MAX	The description of the SQL View.
fOnlyIncludeSubmittedForms	tinyint		Flag to denote that only submitted form instances should be used for this view.
fNoLock	tinyint		Flag to disable Form Locking.

tblSqlViewFormControl

This table contains the information about Form controls that are associated with Form SQL Views created on the system.

COLUMN NAME	DATATYPE	LENGTH	DESCRIPTION
oSVID	varchar	36	Primary Key. SQL View ID.
oFCID	varchar	36	Primary Key. The ID of an associated Form Control.

tblStreamAction

This table contains the data for Stream Action objects.

COLUMN NAME	DATATYPE	LENGTH	DESCRIPTION
oSAID	varchar	36	Primary Key. The ID of this Stream Action.
sSAGroupName	nvarchar	256	Group name for drop-down menus.
fActive	tinyint		Flag to set as active.
tLastError	datetime		Datetime of the last runtime error.
tLastRun	datetime		Datetime when last

COLUMN NAME	DATATYPE	LENGTH	DESCRIPTION
			run.
sFrequency	nvarchar	MAX	Frequency of execution.
nActionSchedule	int		Configured Schedule type.
nDatasetType	int		Dataset type.
oFORMID	varchar	36	Form ID of an associated Form definition.
oKVID	varchar	36	Knowledge View ID of an associated Knowledge View.
sKVInput	nvarchar	1024	Information used from a Knowledge View.
oRunAsUID	varchar	36	The User UID of a user to run the Knowledge View in that user context.
oDBID	varchar	36	The Datasource ID of an associated Datasource object.
sSQL	nvarchar	MAX	SQL statement used by the Datasource.
sRESTURL	nvarchar	1024	URL to use to make a REST call.
fRESTGET	tinyint		Flag to set the REST call as a GET operation.
sRESTUserID	nvarchar	256	User name to pass

COLUMN NAME	DATATYPE	LENGTH	DESCRIPTION
			for REST calls.
sRESTPassword	nvarchar	256	Password to pass for REST calls.
sDistinctDataSetCol	nvarchar	256	Column to use as a SELECT DISTINCT.
oStartFORMID	varchar	36	Form ID of the Form to create when the Stream Action runs.
oRunCONDSETID	varchar	36	Condition Set ID of an associated condition set.
fRESTJSON	tinyint		Flag to determine if the REST call is returned as JSON.
oDBID_RunAsUID	varchar	36	The User UID of the user context to use for invoking the Data-source.

tblStreamActionMap

This table contains the data for Stream Action field mapping.

COLUMN NAME	DATATYPE	LENGTH	DESCRIPTION
oSAMID	varchar	36	Primary Key. The ID of this map.
oSAID	varchar	36	Stream Action ID of the parent Stream Action definition.
nOrder	int		Order of the action.
oFCID	varchar	36	The Form Control ID of an associated

COLUMN NAME	DATATYPE	LENGTH	DESCRIPTION
			Form control.
nValueSysVarType	int		Data type.
sValueSysVarString	nvarchar	1024	Stores string values.
nValueSysVarNumber	decimal18,4		Stores numeric values.
tValueSysVarDateTime	datetime		Stores datetime values.
sValueSysVarStringEx	nvarchar	MAX	Stores extended string values longer than 1024 characters.

tblTaskList

This table contains all the tasks assigned to a user.

COLUMN NAME	DATATYPE	LENGTH	DESCRIPTION
oTLID	varchar	36	Primary Key. Task List's ID.
nTaskListType	int		Task List's type.
oPID	varchar	36	The Partition ID of the parent Partition.
oID	varchar	36	Object ID of the parent object for the task, (usually a Form).
nType	int		Task type.
oSUINSTID	varchar	36	Step User Instance ID referenced by the Task List.
oSTINSID	varchar	36	Step Instance ID referenced by the Task List
oSTID	varchar	36	Step ID referenced by


COLUMN NAME	DATATYPE	LENGTH	DESCRIPTION
			the Task List.
oWFINSTID	varchar	36	Workflow Instance ID referenced by the Task List
oUID	varchar	36	User UID of the user to whom these tasks are assigned.
sStepName	nvarchar	128	Name of the assigned Step.
nPriority	int		Task's priority.
sDesc	nvarchar	1024	Task's description.
tAdd	datetime		Datetime the activity/step was added to the Task List.
tDue	datetime		Datetime the activity/step is due.
oACTUINSTID	varchar	36	Activity User Instance ID referenced by the Task List.
oACTINSTID	varchar	36	Activity Instance ID referenced by the Task List.
oACTID	varchar	36	Activity ID referenced by the Task List.
oPRINSTID	varchar	36	Process Timeline ID referenced by the Task List.
sActName	nvarchar	128	Name of the activity.
sSubTaskName	nvarchar	128	Name of the subtask.
sEmailAddress	nvarchar	256	User's email address.

tblUsage

COLUMN NAME	DATATYPE	LENGTH	DESCRIPTION
oUSAGEID	varchar	36	Primary Key. The ID of the usage record.
nMemoryPercent	Int		Percentage of memory used.
nCPUPercent	Int		Percentage of CPU used.
nDiskPercent	Int		Percentage of Disk Space used.
nDBSize	Int		Size of the database in bytes.
nDBPercent	Int		Percentage of Database Space used.
tPollTaken	Datetime		Datetime the last system poll was taken.
sServerID	nvarchar	1024	The Server ID of the server.

tblUsageAlerts

Administrative table to record alerts for system usage.

 This table contains data gathered automatically by the system, and is displayed in the system logs. BP Logix doesn't recommend altering the values in this table.

COLUMN NAME	DATATYPE	LENGTH	DESCRIPTION
oUSAGEALERTID	varchar	36	Primary Key. Usage Alert ID.
tCPUAlert	datetime		Datetime a CPU alert was generated.

COLUMN NAME	DATATYPE	LENGTH	DESCRIPTION
tMemoryAlert	datetime		Datetime a Memory alert was generated.
tDiskAlert	datetime		Datetime a Disk Space alert was generated.
tDBAlert	datetime		Datetime a Database alert was generated.
sServerID	nvarchar	1024	The Server ID of the server generating the alert.

tblUser

This table contains data about user accounts stored in Process Director.



BP Logix STRONGLY warns customers not to directly alter the data in this table.

COLUMN NAME	DATATYPE	LENGTH	DESCRIPTION
oUID	varchar	36	Primary Key. User's UID.
sUserID	nvarchar	64	User's ID, i.e., user-name.
sUserName	nvarchar	128	User's real name.
sExternalGUID	nvarchar	256	User's External ID for AD synchronization.
oADID	varchar	36	The ID of the user's Active Directory Synchronization Profile in Process Director
sPassword	nvarchar	64	User's password.

COLUMN NAME	DATATYPE	LENGTH	DESCRIPTION
sEmailAddress	nvarchar	256	User's email address,
guidSessionID	nvarchar	36	GUID used to identify the user's active session.
sAutoLoginCookie	nvarchar	36	ID of cookie determining whether the user is automatically logged in.
oCurrentPROFILEID	varchar	36	The Profile ID of the user's current Workspace.
nAuthType	int		The authentication type for this user.
fSysAdmin	tinyint		Flag to determine whether the user is a System Administrator
fLoggedIn	tinyint		Flag reflecting whether the user is logged in.
tLastLogin	datetime		Datetime when the user last logged in.
tLastActivity	datetime		Datetime of the user's last activity.
fDisabled	tinyint		Flag to determine whether the user is disabled.
fSync	tinyint		Flag to determine whether this user will sync with his portal user group.

COLUMN NAME	DATATYPE	LENGTH	DESCRIPTION
oDelegateUID	varchar	36	The User UID of a user to whom this user's work is delegated.
tCreate	datetime		Datetime user account was created.
fSysConfigAdmin	tinyint		Flag to determine whether the user is a System Configuration Admin.
fSysUserAdmin	tinyint		Flag to determine whether the user is a User Admin.
fSysInstallAdmin	tinyint		Flag to determine whether the user is a System Install Admin.
fSysTroubleAdmin	tinyint		Flag to determine whether the user is a Troubleshooting Admin.
fSysPartitionAdmin	tinyint		Flag to determine whether the user is a Partition Admin.
fPendingUser	tinyint		Flag to determine whether the user is a new, pending user who hasn't logged in.
guidTemp	varchar	36	Temporary GUID for new users.
fForcePwdChange	tinyint		Flag to determine whether the user will

COLUMN NAME	DATATYPE	LENGTH	DESCRIPTION
			be forced to change his password on next log in.
fDelegationOn	tinyint		Flag to determine whether this user is delegating all his tasks to oDelegateUID.
fDelegationRange	tinyint		Flag to determine if delegation is set to a date range.
nDefaultPage	int		Specifies the default home page for Administrative users, via the nDefaultPage enum.
tDelegateStartTime	datetime		Datetime delegation starts.
tDelegateEndTime	datetime		Datetime delegation ends.
sCulture	varchar	64	User's Culture String.
nTZOffset	int		Number of hours the user's local time zone is offset from the Process Director server's time zone.
sDomain	nvarchar	256	User's domain.
sTimeZone	varchar	128	User's Time Zone.
fAutoDST	tinyint		Flag to determine whether to automatically set Daylight


COLUMN NAME	DATATYPE	LENGTH	DESCRIPTION
			Savings Time.
nNumLogins	int		The number of logins for the user.
nAvgLoginSecs	int		The average number of seconds the user is logged in.
fDisableEmail	tinyint		Flag to disable the user's email notifications.
sCustomString	nvarchar	1024	Optional custom string to associate with the user.
tCustomDate	datetime		Optional custom date to associate with the user.
nCustomNumber	int		Optional custom number to associate with the user.
tLastPwdChange	datetime		Datetime the user last changed the password.
nLoginAttempts	int		Number of times the user has attempted to log in.
fLockedOut	tinyint		Flag that determines whether the user is locked out.
sCustomString2	nvarchar	1024	Optional custom string to associate with the user.

COLUMN NAME	DATATYPE	LENGTH	DESCRIPTION
sPhone	nvarchar	64	User's phone number.
sDescription	nvarchar	1024	User's description.
sTitle	nvarchar	256	User's title.
sOffice	nvarchar	256	User's office.
sCompany	nvarchar	256	User's company.
sDept	nvarchar	256	User's department.
nShowCloudLicense	int		Cloud Licensing field.
fSysImpersonateAdmin	tinyint		Flag to determine if this user can impersonate other users.
oManagerUID	varchar	36	The User UID of the user's manager.
sBusinessUnit	nvarchar		The user's business unit.
sLegalEntity	nvarchar		The user's legal entity.
oImpersonatedByUID	varchar	36	The User UID of a person currently impersonating this user.
sCountry	nvarchar	256	User's country.
sLocation	nvarchar	256	User's location.
guidPwdChange	nvarchar	36	Password Change GUID.
sDesktopSave	nvarchar	MAX	Information to save to the desktop.
oShareTasksWithUIDs	nvarchar	MAX	The list of User UIDs for user for whom this user is sharing

COLUMN NAME	DATATYPE	LENGTH	DESCRIPTION
			tasks under Shared Delegation.
fDayPass	tinyint		Flag to determine if the user is a Day Pass license user.
tDayPassAccess	datetime		Date/Time the user last accessed the system as a Day Pass user.
fMobileAppUser	tinyint		Flag to determine if the user is a mobile application user.
fAppenateAdmin	tinyint		Flag to determine if the user is a mobile application administrator.
sAppenateUID	varchar	256	The User UID of the user context to use when accessing the mobile application.
sPasswordAppenate	nvarchar	512	Password for the mobile application.
fSysDeveloperAdmin	tinyint		Flag to specify if the user is a System Developer Admin.
sPasswordSalt	nvarchar	36	Encryption salt for passwords.

tblUserAnonymous


This administrative table contains information about anonymous Day Pass system users.

 This table contains data gathered automatically by the system, and is displayed in the system logs. BP Logix doesn't recommend altering the values in this table.

COLUMN NAME	DATATYPE	LENGTH	DESCRIPTION
oANONID	varchar	36	Primary Key. ID of this user.
sCookie	varchar	36	Browser cookie value.
tDayPassAccess	datetime		Datetime the user accessed the system.
tLastActivity	datetime		Datetime of last activity.
nDayPassesUsed	int		Day pass tracking.
sIPAddress	nvarchar	21	IP Address of the user.

tblUserPwdHistory

This administrative table contains the history of user password changes.

 This table contains data gathered automatically by the system, and is displayed in the system logs. BP Logix doesn't recommend altering the values in this table.

COLUMN NAME	DATATYPE	LENGTH	DESCRIPTION
oPWDID	varchar	36	Primary Key. ID of this record
oUID	varchar	36	User's UID.
tChanged	datetime		Datetime when last changed.
sPrevPassword	nvarchar	512	Previous password used.

tblValidation

This table contains the validation rules configured in a Form.

COLUMN NAME	DATATYPE	LENGTH	DESCRIPTION
oVALID	varchar	36	Primary Key. ID of this validation rule.
oFORMID	varchar	36	Form ID of the Form for this validation rule.
nValidationType	int		Type of validation.
oCONDSETID	varchar	36	Condition Set ID of the condition set attached to this validation.
oFCID	varchar	36	Form Control ID of the Form control referenced by this validation.
sMessage	nvarchar	1024	Error message this validation rule returns.

tblWfBranch

This table contains information for Workflow branches.

COLUMN NAME	DATATYPE	LENGTH	DESCRIPTION
oBRID	varchar	36	Primary Key. ID of the branch.
oWFID	varchar	36	Workflow ID of the parent Workflow.
oSrcSTID	varchar	36	Step ID of the Step that started this branch.

COLUMN NAME	DATATYPE	LENGTH	DESCRIPTION
oDestSTID	varchar	36	Step ID of the Step that ends this branch.
sBranchName	nvarchar	128	Name of the branch.
sDesc	nvarchar	1024	Branch's description.
nAssignUsers	int		Number of users that are assigned to the source Step.
nButtonOrder	int		Branch Button order.
nCondUserPercent	int		Percentage of users that must select this branch to move to the next Step.
nCondUserNum	int		Number of users that must select this branch to move to the next Step.
nIcon	int		ID of the icon used for this branch.
fDefaultBranch	tinyint		Flag to determine if this is the default branch.
fCommentPopup	tinyint		Flag to show comments a popups.
fCommentReq	tinyint		Flag to require comments.
fSaving	tinyint		Flag set when saving.
sColor	nvarchar	64	Color of the branch in the Workflow definition.
oCONDSETID	varchar	36	Condition Set ID of

COLUMN NAME	DATATYPE	LENGTH	DESCRIPTION
			the condition set associated with this branch.
sConfirmText	nvarchar	256	Confirmation text.
SResultList	nvarchar	256	List of branch results.
oDisplayCONDSETID	varchar	36	Condition Set ID of the condition set determining whether this branch should display as a button on the Form.
fAllowCompleteTaskList	Tinyint		Flag to allow this branch to be shown in a column in a Task List.
fSkipValidation	tinyint		Flag to determine whether validation should be skipped for this branch.
sIconColor	nvarchar	64	Button icon color.
sButtonBackColor	nvarchar	64	Button background color.
sButtonTextcolor	nvarchar	64	Button text color.

tblWfInstance

This table contains information for Workflow instances.

COLUMN NAME	DATATYPE	LENGTH	DESCRIPTION
oWFINSTID	varchar	36	Primary Key. ID of the Workflow instance.

COLUMN NAME	DATATYPE	LENGTH	DESCRIPTION
oWFID	varchar	36	Workflow ID of the Workflow definition.
nStatus	int		Status of this Workflow instance.
nTermReason	int		Reason for termination of the instance.
sTermDesc	nvarchar	1024	Text description of termination reason.
nPriority	int		Priority of this Workflow instance.
tStart	datetime		Datetime this instance was started.
tEnd	datetime		Datetime this instance was ended.
tDue	datetime		Datetime this instance was due.
fError	tinyint		Flag indicating the instance is in error.
oParentWFID	varchar	36	Workflow ID of the parent Workflow.
oCurrFORMINSTID	varchar	36	Form ID of the Form instance this Workflow instance is using.
oAdminUID	varchar	36	User UID of a user who took an administrative action.
sAdminComment	nvarchar	512	Administrator's comments.

COLUMN NAME	DATATYPE	LENGTH	DESCRIPTION
oParentPRINSTID	varchar	36	The Project Instance ID of the parent Process Timeline instance.
oParentACTINSTID	varchar	36	The Activity Instance ID of the parent Process Timeline Activity instance.
oParentWFINSTID	varchar	36	The Workflow Instance ID of the parent Workflow instance.
oParentSTINSTID	varchar	36	The Workflow Step Instance ID of the parent Workflow Step instance.
sInitiatorComment	nvarchar		Contains an optional comment from the timeline initiator.
sMessage	nvarchar	1024	Message generated by this object,

tblWfStep

This table contains data about a Workflow Step.

COLUMN NAME	DATATYPE	LENGTH	DESCRIPTION
oSTID	varchar	36	Primary Key. This Step ID.
oWFID	varchar	36	Workflow ID of the parent Workflow.
sStepName	varchar	128	Step's name.

COLUMN NAME	DATATYPE	LENGTH	DESCRIPTION
sDesc	nvarchar	1024	Step's description.
sInstructions	nvarchar	1024	Step's instructions.
nTaskType	int		The Step's type.
nCompleteWhen	int		Step's complete when setting.
nRestartPrevUsers	int		Step's restart user's setting.
fBlock	tinyint		Flag to determine if this Step should block user input.
fEmail	tinyint		Flag to determine whether this Step should send an email.
fSaving	tinyint		Temporary flag used when importing a new timeline.
oEmailFORMID	varchar	36	The Form ID of the email template this Step will use.
nReminderSecs	int		Number of seconds between reminders.
nDueDateSecs	int		Number of seconds until due date.
nDueDateAction	int		Action to perform on due date.
oDueDateFCID	varchar	36	The Form Control ID of the form control that sets the Step's due date.
oTemplateID	varchar	36	The Template ID of a

COLUMN NAME	DATATYPE	LENGTH	DESCRIPTION
			Word form used as a template.
oFORMID	varchar	36	The Form ID of the Form definition associated with this Step.
sObjGroupName	nvarchar	256	Step's group.
nAddObj	int		Objects to add to the Step.
fMakeCurrForm	tinyint		Flag to determine to open the current form instance for the Step.
fReAuthenticate	tinyint		Flag to determine if the user must reauthenticate prior to performing the task for this Step.
fCommentPopup	tinyint		Flag to determine whether this Step should have a comment popup.
oScriptDID	varchar	36	Script ID of an associated script.
sScriptFunction	nvarchar	256	Name of the script function called by this Step.
fWaitForSubWFID	tinyint		Flag to determine whether to wait for a child Workflow to complete.
fWaitForRunningSteps	tinyint		Flag to determine

COLUMN NAME	DATATYPE	LENGTH	DESCRIPTION
			whether to wait for running Steps to complete.
oSubWFID	varchar	36	Workflow ID of the child Workflow.
nXcoor	int		Step's x-coordinate in the Workflow builder.
nYcoor	int		Step's y-coordinate in the Workflow builder.
sColor	nvarchar	64	Step's color in the Workflow builder.
oCTFORMINSTID	varchar	36	Custom Task Form Instance ID for a Custom Task associated with this Step.
oDueDateAssignedRULEID	varchar	36	Rule ID of a Business Rule that determines the Step's due date.
oExternalGUID	varchar	36	Step's external GUID.
nAutoShowTask	int		Setting to show the user's task if it is next in the process.
nIcon	int		This Step's icon.
fPushFormMetaData	tinyint		Flag to determine whether to push Form Meta Data.
oJumpToSTID	varchar	36	Step Id of the Step to which to jump.
sEventName	nvarchar	256	Step event name.
nConfigDuration	int		Duration setting for

COLUMN NAME	DATATYPE	LENGTH	DESCRIPTION
			the Step.
nConfigDurationType	int		Setting for increments to use for duration.
fWaitForSubPRID	tinyint		Flag to determine whether to wait for a child Process Timeline to conclude.
oSubPRID	varchar	36	Project ID for the child Process Timeline.
fCopyObjectsUp	tinyint	1	Copy Workflow items to the parent process.
fCopyObjectsDown	tinyint	1	Copy process items from the parent process.
sCopyUpByGroup	nvarchar	256	Copy group names to the parent process.
sCopyDownByGroup	nvarchar	256	Copy group names from the parent process.
fWaitForBranchCond	tinyint		Flag to determine whether the Workflow Step has to wait for a branch's condition to complete.
fAllowEmailComplete	tinyint		Flag to determine whether to allow email notifications to complete.

COLUMN NAME	DATATYPE	LENGTH	DESCRIPTION
sDueDateSysVar	nvarchar	256	Text value for the due date.
fInSequence	tinyint		Setting to determine the sequence by which the Step is assigned to users.
oRestartPrevUsersCond	varchar	36	Condition Set ID for the conditions to restart users in the task.
nRestartPrevUsersElse	int		Setting for determining which users should be restarted.
fAllowInviteByEmail	tinyint		Flag to determine if users can invite other to the task via email.
nAssignUsersFlag	Int		Setting for user assignment.
fUserMustAccept	tinyint		Flag indicating that a user must accept a task before it is assigned.
fRequiresUser	tinyint		Flag to determine whether a user must manually complete the task.
fRunAsync	tinyint		Flag to determine whether the Step runs asynchronously.
fAllowAnonymousTasks	tinyint		Flag to determine if the task can be com-

COLUMN NAME	DATATYPE	LENGTH	DESCRIPTION
			pleted by an anonymous user.
nCaseActions	int		Setting for available Case actions.
oCASEID	varchar	36	Case ID if the Case definition to use to create a Case instance.
oCaseCONDSETID	varchar	36	Condition Set ID of the conditions set to find an existing case.
fSwitchToCaseMode	tinyint		Flag to indicate the process and all contents should be switched to Case context.
fIncrFormVers	tinyint		Flag to increment the Form version.
sIconColor	nvarchar	64	Icon color for the Step result button.
sOnlyGroupsToCase	nvarchar	256	Groups to pass to the Case Instance.
fAddToCase	tinyint		Flag to add the Step to a Case.
fAllowSharedDelegation	tinyint		Flag to allow Shared Delegation for the Step.

tblWfStepInst

This table contains information for an instance of a Workflow Step.

COLUMN NAME	DATATYPE	LENGTH	DESCRIPTION
oSTINSTID	varchar	36	Primary Key. ID of the Step instance.
oSTID	varchar	36	Step ID of the parent Step definition.
oWFINSTID	varchar	36	Workflow Instance ID of the parent Workflow instance.
nStatus	int		Status of this Step.
nTermReason	int		Reason this Step was terminated.
oJumpToSTID	varchar	36	Step ID of the Step to jump to.
sMessage	nvarchar	1024	Step message text.
tStart	datetime		Datetime this Step started.
tEnd	datetime		Datetime this Step finished.
tDue	datetime		Datetime this Step was due.
tLastReminder	datetime		Datetime that this Step last sent out a reminder.
sStepName	nvarchar	128	Name of the Step.
nXcoor	int		X coordinate of this Step's graphic in the Workflow definition.
nYcoor	int		Y coordinate of this Step's graphic in the Workflow definition.
sBRIDsTaken	nvarchar	256	Branch IDs of the

COLUMN NAME	DATATYPE	LENGTH	DESCRIPTION
			branches this Step took.
sBranchNamesTaken	nvarchar	256	Names of the branches this Step took.
fError	tinyint		Flag to determine if the Step instance is in error.
fDueDateProcessed	tinyint		Flag to determine if the Step has processed the due date.
oSubWFID	varchar	36	The Workflow ID of a child Workflow called by this Step.
oAdminUID	varchar	36	The User UID of a user who took an administrative action.
sAdminComment	nvarchar	512	Administrator's comment.
nTimesRun	int		Number of times this Step has run.
nTaskType	int		Type of task for this Step (notification, user, etc.).
sEventName	nvarchar	256	Step event name.
oSubPRID	varchar	36	Project ID of a child Process Timeline called by this Step.
oSubWFINSTID	varchar	36	Workflow Instance ID of a child Workflow

COLUMN NAME	DATATYPE	LENGTH	DESCRIPTION
			instance called by this Step.
oSubPRINSTID	varchar	36	Project Instance ID of a child Process Timeline instance called by this Step.
fEventPosted	tinyint	1	Indicates if the event was posted on this wait task.
oWFID	varchar	36	The Workflow ID of the Workflow definition containing this Step.

tblWfStepNotify

This table contains information for a Workflow notification Step.

COLUMN NAME	DATATYPE	LENGTH	DESCRIPTION
oSNID	varchar	36	Primary Key. ID of this notification.
oSTID	varchar	36	Step ID of the Step using this notification.
nWhenToNotify	int		Setting for invoking notifications.
nReminderSecs	int		Number of seconds between reminders.
nUserSysVarType	int		User type.
sUserSysVarString	nvarchar	1024	Users to notify.
oWFID	varchar	36	Workflow ID of the Workflow containing

COLUMN NAME	DATATYPE	LENGTH	DESCRIPTION
sNotifyDesc	varchar	1024	this notification. Notification description.

tblWfStepNotifyInst

This table contains information for an instance of a Workflow notification Step.

COLUMN NAME	DATATYPE	LENGTH	DESCRIPTION
oSNINSTID	varchar	36	Primary Key. ID of this notification instance.
oSNID	varchar	36	The Step Notification ID of the parent notification definition.
oSTINSTID	varchar	36	Step Instance ID for the Step instance sending this notification instance.
oWFINSTID	varchar	36	Workflow Instance ID of the Step Instance that's sending the notification.
tLastNotify	datetime		Datetime of last notification.
nReminderSecs	int		Number of seconds between reminders.
nUserSysVarType	int		User type setting.
sUserSysVarString	nvarchar	1024	Users to notify.
nWhenToNotify	int		User notification setting.
sNotifyDesc	nvarchar	1024	Notification description.

tblWfStepUser

This table contains the users for a given Workflow Step.

COLUMN NAME	DATATYPE	LENGTH	DESCRIPTION
oSUID	varchar	36	Primary Key. The ID of this object.
oSTID	varchar	36	The Step ID of the parent Step.
oWFID	varchar	36	Workflow ID of parent Workflow.
nUserSysVarType	int		The return format for a sysvar referencing this Step.
sUserSysVarString	nvarchar	1024	The return value for a sysvar referencing this Step.
oSubTaskNameArrayFCID	varchar	36	Form Control ID for an array control referenced by this Step instance.
nOrder	int		Step order.

tblWfStepUserInst

This table contains information for an instance of a Workflow user Step.

COLUMN NAME	DATATYPE	LENGTH	DESCRIPTION
oSUIINSTID	varchar	36	Primary Key. ID of this object.
oSUID	varchar	36	The Step User ID of the parent Step user.
oSTINSTID	varchar	36	The Step Instance ID of the parent Step instance.

COLUMN NAME	DATATYPE	LENGTH	DESCRIPTION
oSTID	varchar	36	The Step ID of the parent Step definition.
oWFINSTID	varchar	36	The Workflow Instance ID of the parent Workflow instance.
oUID	varchar	36	The User UID of the user involved in this Step.
sUserName	nvarchar	256	Name of the user involved in this Step.
sStepName	nvarchar	256	Name of the running Step.
nStatus	int		Status of the Step using this info.
nTermReason	int		Reason the Step has been terminated.
sComment	nvarchar	Max	Signature comments made when the Step was completed.
tStart	datetime		Datetime the Step was started.
tEnd	datetime		Datetime the Step was ended.
oBRID	varchar	36	Business Rule ID of the Business Rules that sets the participant for this Step.
sBranchName	nvarchar	128	Branch name taken

COLUMN NAME	DATATYPE	LENGTH	DESCRIPTION
			for this Step,
oOnBehalfOfUID	varchar	36	User UID of the user for whom this task was completed "on behalf of".
oAdminUID	varchar	36	User UID of a user that took and administrative action.
sAdminComment	nvarchar	512	Administrator's comment.
oReassignedToUID	varchar	36	The User UID of the user to whom this Step was reassigned.
nHowCompleted	int		Action taken to complete the Step.
oWFID	varchar	36	The Workflow ID of the parent Workflow definition for this Step.
sSubTaskName	nvarchar	128	The name of this Step's subtask.
nOrder	int		The Step order.
oInvitedByUID	varchar	36	The User UID of a user who invited another user to participate in the task.
fDidReauth	tinyint		Flag to determine whether the user reauthenticated to complete this Step.

COLUMN NAME	DATATYPE	LENGTH	DESCRIPTION
oCompletedByUID	varchar	36	The User UID of the user who completed this Step.
oImpersonatedByUID	varchar	36	The User UID of the user who completed this Step via impersonation.
sEmailAddress	nvarchar	256	User's email address.
fSharedDelegation	tinyint		Flag to determine if this Step implements Shared Delegation.

tblWorkflow

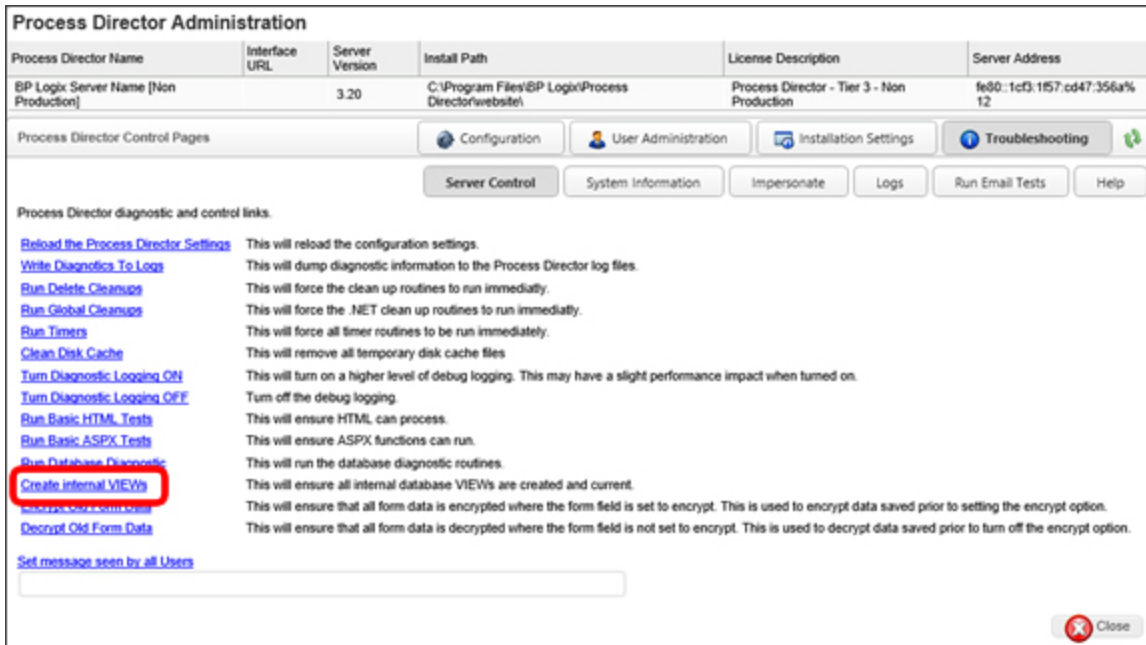
This table contains data for Workflow definitions.

COLUMN NAME	DATATYPE	LENGTH	DESCRIPTION
oWFID	varchar	36	Primary Key. Workflow ID for this definition.
sInstName	nvarchar	256	Name of the instantiated Workflow.
nPriority	int		Workflow's priority.
fDeleteWorkflow	tinyint		Flag to determine whether the Workflow should be deleted after completion.
nDueDateSecs	int		Number of seconds until Workflow's due date.
oEmailFORMID	varchar	36	The Form ID of the

COLUMN NAME	DATATYPE	LENGTH	DESCRIPTION
			email template used for notifications.
fSubWfCopyDown	tinyint		Flag to determine whether attachments to the Workflow should be copied to child processes.
fSubWfCopyUp	tinyint		Flag to determine whether attachments to the Workflow should be copied to parent processes.
sLinkFORMID	varchar	256	The Form ID of the Form to which this Workflow is linked.
oScriptDID	varchar	36	Document ID of an associated script.
sCopyDownGroup	nvarchar	256	The group name of documents copied down to child processes.
sCopyUpGroup	nvarchar	256	The group name of documents copied up to parent processes.
nAutoShowTask	int		Setting to determine whether to show the user the next task, if the user is a participant.

Internal Database Views

A user with IT Admin access can create an internal SQL View in Process Director’s database. The views will be created on the database after clicking the **Create Internal VIEWS** link on the IT Admin’s troubleshooting page.



We have included multiple pre-constructed Views for use with the reporting and they could also be used in your Knowledge Views. Here is a detailed description of each field in the Views. At the end of this section, there is a short explanation of some of the more advanced database concepts that are implicated by using these Views.

Enumerators

Several of the Views use common enumerators for status, termination reason, etc.

IsTimeline Enumerator

The **IsTimeline** field will contain one of the following values.

STATUS	DEFINITION
0	Workflow.
1	Process Timeline.

Status Enumerator

The **Status** field will contain one of the following status codes.

STATUS	DEFINITION
0	Pending. The process is pending (not yet running).
1	Active. The process is running.
2	Inactive. The process has been completed

TermReason Enumerator

The **TermReason** field will contain one of the following termination codes.

STATUS	DEFINITION
0	NotSet. Not yet terminated.
1	Normal. Normal termination.
2	Timeout . Timeout occurred causing termination of step or Workflow or project (ripple to "non-done" users in step).
3	Did Not Finish. The user did not finish because enough users responded to transition to next step (e.g. approval %).
4	Canceled. Admin canceled Workflow, a step, or a user in a step.
5	Reassigned. This user step/activity was reassigned to another user.
6	NotNeeded. The step/activity was not needed (because of rule).
7	Notified. This value indicates it was a notify step/activity and the user was notified (so it shows up in the routing slip).
8	Stopped. Process stopped at this activity, no dependencies will be met.

Views

The following SQL Views are available for use as a default.

bpProcess

COLUMN	DATA TYPE	LENGTH	NULLABLE	EXPLANATION	POSSIBLE VALUES
DefinitionName	nvarchar	256	No	The name of	

COLUMN	DATA TYPE	LENGTH	NULLABLE	EXPLANATION	POSSIBLE VALUES
				the process definition.	
InstanceName	nvarchar	256	No	The name of the process instance.	
ID	varchar	36	No	The ID of the process definition.	
INSTID	varchar	36	No	The ID of the process instance.	
InitiatorUserID	varchar	36	Yes	The User UID of the initiator of the process.	
IsTimeline	int		No	If this process is a timeline.	See IsTimeline Enumerator.
PARENTPROCESSID	varchar	36	Yes	The instance ID of the parent process if this process has been launched as a sub-process of a timeline.	
FormInstanceID	varchar	36	Yes	The Instance ID of the form instance.	
Status	int		No	Whether or not this process is	See Status Enumerator.

COLUMN	DATA TYPE	LENGTH	NULLABLE	EXPLANATION	POSSIBLE VALUES
TermReason	int		No	active. The reason this process is no longer active.	See TermReason Enumerator.
StartTime	datetime		Yes	The date and time that this process was started.	
EndTime	datetime		Yes	The date and time that this process ended.	
PredictedEndTime	datetime		Yes	The date and time that this project is predicted to end. These dates are constantly updated to reflect changes to processes.	
IsComplete	int		No	Is the process complete?	
IsActive	int		No	Is the process active?	
ElapsedSeconds	int		No	The number of seconds that have elapsed since the process started, or the total	

COLUMN	DATA TYPE	LENGTH	NULLABLE	EXPLANATION	POSSIBLE VALUES
				runtime for the task, if complete.	

bpProcessTask

This view includes the process tasks from the Parent, User, and Subprocess task types.

COLUMN	DATA TYPE	LENGTH	NULLABLE	EXPLANATION	POSSIBLE VALUES
DefinitionName	nvarchar	256	No	The name of the process definition.	
InstanceName	nvarchar	256	No	The name of the process instance.	
TaskName	nvarchar	128	Yes	The name of the task definition.	
ID	varchar	36	Yes	The ID of the process definition.	
INSTID	varchar	36	Yes	The ID of the process instance.	
TASKID	varchar	36	Yes	The definition ID of the task.	
TASKINSTID	varchar	36	Yes	The instance ID of the task.	
IsTimeline	int		No	If this process is a Timeline.	See IsTimeline

COLUMN	DATA TYPE	LENGTH	NULLABLE	EXPLANATION	POSSIBLE VALUES
					Enumerator.
IsUserTask	int		No	Is the task a User task?	
IsProcessTask	int		No	Is the task a Process task?	
SUBPROCESSINSTANCEID	varchar	36	Yes	The Instance ID of the sub-process instance for the task, if any.	
SUBPROCESSID	varchar	36	Yes	The Process ID of the sub-process for the task, if any.	
Status	int		No	Whether or not this process is active.	See Status Enumerator.
TermReason	int		No	The reason this process is no longer active.	See TermReason Enumerator.
StartTime	datetime		yes	The date and time that this process was started.	
EndTime	datetime		Yes	The date and time that this process ended.	
DueTime	datetime		Yes	The assigned / calculated due	

COLUMN	DATA TYPE	LENGTH	NULLABLE	EXPLANATION	POSSIBLE VALUES
				date for this task.	
PredictedStartTime	datetime		Yes	The date and time that this project is predicted to start. These dates are constantly updated to reflect changes to processes.	
PredictedEndTime	datetime		Yes	The date and time that this project is predicted to end. These dates are constantly updated to reflect changes to processes.	
Result	nvarchar		Yes	The activity result, or the branch name taken for a step.	
IsPredictedLate	int		No	Is the task predicted to be late?	
IsRunningLate	int		No	Is the task running late?	

COLUMN	DATA TYPE	LENGTH	NULLABLE	EXPLANATION	POSSIBLE VALUES
IsRunningOntime	int		No	Is the task running within the predicted time frame?	
IsCompletedLate	int		No	Did the task end later than scheduled.	
IsCompletedOntime	int		No	Did the task end within the predicted time frame?	
IsComplete	int		No	Is the task complete?	
IsActive	int		No	Is the task running currently?	
IsPending	int		No	Is the task in Pending status?	
ElapsedSeconds	int		No	The number of seconds that have elapsed since the process started, or the total run time for the task, if complete.	

bpProcessTaskUser

COLUMN	DATA TYPE	LENGTH	NULLABLE	EXPLANATION	POSSIBLE VALUES
DefinitionName	nvarchar	256	No	The name of the process definition.	
InstanceName	nvarchar	256	No	The name of the process instance.	
UserUID	varchar	36	Yes	The User UID of the assigned user.	
TaskName	nvarchar	128	Yes	The name of the task.	
TASKID	varchar	36	Yes	The task definition ID	
TASKINSTID	varchar	36	No	The instance ID for the task	
ID	varchar	36	Yes	The Definition ID for the process	
INSTID	varchar	36	No	The instance ID for the process	
IsTimeline	int		No	If this process is a Timeline.	
Status	int		No	Whether or not this process is active.	See Status Enumerator
TermReason	int		No	The reason this process is no longer active.	See TermReason Enumerator.
StartTime	datetime		Yes	The starting	

COLUMN	DATA TYPE	LENGTH	NULLABLE	EXPLANATION	POSSIBLE VALUES
				time of the task.	
EndTime	datetime		Yes	The ending time of the task.	
UserComment	nvarchar	Max	Yes	These are the routing slip comments.	
Result	nvarchar	128	Yes	These is the activity result, or the Workflow branch taken in a task that has been completed.	
IsComplete	int		No	Is the task complete?	
IsActive	int		No	Is the task running currently?	
IsPending	int		No	Is the task in Pending status?	
ElapsedSeconds	int		No	The number of seconds that have elapsed since the process started, or the total runtime for the task, if complete.	

bpTaskList

COLUMN	DATA TYPE	LENGTH	NULLABLE	EXPLANATION	POSSIBLE VALUES
TLID	varchar	36	No	The Task List ID. A unique identifier for this particular Task.	
UserUID	varchar	36	Yes	The user that has been assigned this task.	
TaskListType	int		No	The kind of task that has been assigned to the user.	0 = NotSet 1 = Work-flow Task 2 = Check Out 3 = Saved Form Instance 4 = Process Timeline Task
ObjectID	varchar	36	Yes	The specific and unique object ID for this document or process instance.	
ObjectType	int		No	The type of object that this task represents.	0 = NotSet 1 = Document 7 = Workflow Instance

COLUMN	DATA TYPE	LENGTH	NULLABLE	EXPLANATION	POSSIBLE VALUES
					60 = Process Timeline Instance
TASKID	varchar	36	Yes	The ID of the task definition.	
TASKINSTID	varchar	36	Yes	The ID of the task instance.	
TaskName	nvarchar	128	Yes	The name of the Task like "User Step 3" or "Notification"	
TaskInstructions	nvarchar	1024	Yes		
Priority	int		No	The assigned priority.	1 = High Priority 2 = Medium Priority 3 = Low Priority
AssignTime	datetime		Yes	The time that the task was assigned.	
DueTime	datetime		Yes	The time that the task is due.	

bpUser

COLUMN	DATA TYPE	LENGTH	NULLABLE	EXPLANATION	POSSIBLE VALUES
UserID	nvarchar	64	Yes	The user logon name.	

COLUMN	DATA TYPE	LENGTH	NULLABLE	EXPLANATION	POSSIBLE VALUES
UserName	nvarchar	128	Yes	The name of the user.	
EmailAddress	nvarchar	256	Yes	The email address of the user.	
UserUID	varchar	36	No	The User UID of the user.	
ADID	varchar	36	Yes	The active directory ID of the user.	
AuthType	int		No	The type of authorization used to allow the user into Process Director	0 = BuiltIn 1 = Windows 2 = LDAP 3 = External
LastActivity	datetime		Yes	The last time the user was authorized inside Process Director.	
LastLogin	datetime		Yes	The last time the user logged in.	
Disabled	tinyint		No	Flag that indicates whether the user account is disabled.	
CustomString	Nvarchar	1024	Yes	The Custom	

COLUMN	DATA TYPE	LENGTH	NULLABLE	EXPLANATION	POSSIBLE VALUES
				String user attribute.	
CustomString2	Nvarchar	1024	Yes	The Custom String 2 user attribute.	
CustomNumber	int		No	The Custom Number user attribute.	
CustomDate	DateTime		Yes	The Custom Date user attribute.	
Phone	Nvarchar	64	Yes	The Phone user attribute.	
Description	Nvarchar	1024	Yes	The Description user attribute.	
Title	Nvarchar	256	Yes	The Title user attribute.	
Office	Nvarchar	256	Yes	The Office user attribute.	
Company	Nvarchar	256	Yes	The Company user attribute.	
Department	Nvarchar	256	Yes	The Department user attribute.	
LegalEntity	Nvarchar	256	Yes	The LegalEntity-user attribute.	
BusinessUnit	Nvarchar	256	Yes	The BusinessUnit user attribute.	

COLUMN	DATA TYPE	LENGTH	NULLABLE	EXPLANATION	POSSIBLE VALUES
Country	Nvarchar	256	Yes	The Country user attribute.	
Location	Nvarchar	256	Yes	The Location user attribute.	
ManagerUID	Nvarchar	36	Yes	The User UID of the user's Manager.	

Audit Log

The audit log contains data recording most events in an installation of Process Director. The audit log displays records in the following CSV format:

Date, Event, User ID, IP, Text, Object Name, Object Type, UID, OID, PID, Impersonate User ID, Impersonate UID

Where the columns are defined as follows:

Date: the date and time the event happened.

Event: the type of event. The event type can be any of the events listed in the **Log Events** section of the System Administrator's Guide's [Logs page](#).

User ID: the ID of the user that caused the event.

IP: the IP address the user was logged on with.

Text: an explanation of the event

Object Name: the name of the object involved in the event

Object Type: the type of the object involved in the event

UID: the UID of the user affected by the event.

OID: the ID of the object affected by the event.

PID: the ID of the process involved in the event.

Impersonate User ID: the ID of the user that was impersonating the user.

Impersonate UID: the UID of the user that was impersonating the user.

This page intentionally left blank.